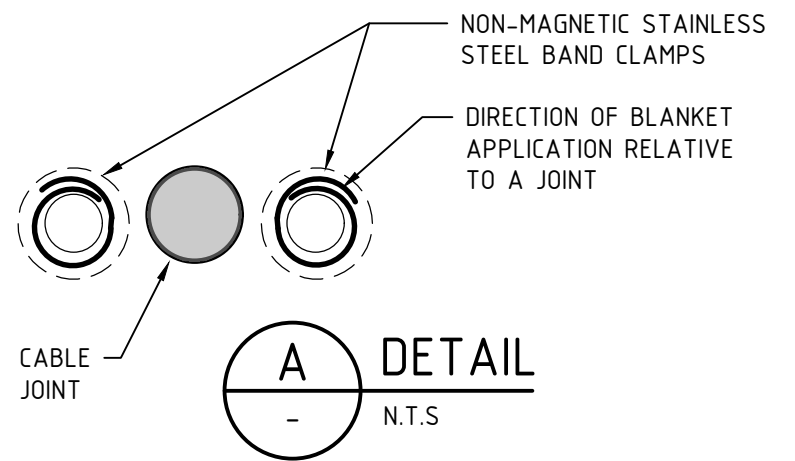


**PROMATECT-L BOARDS
AT CABLE LADDER CHANNEL CANTILEVER
UNISTRUT SUPPORT BRACKET**

AUSGRID STRUCTURAL ENGINEER SHALL BE CONSULTED TO ASSESS IF ANY ADDITIONAL FIRE MITIGATION MEASURES ARE REQUIRED FOR ANY CANTILEVER UNISTRUT BRACKET AND/OR UNISTRUT SUPPORT POST WITHIN THE 'ZONE OF INFLUENCE' OF THE CABLE JOINT.



NOTES:

1. ALL TRAYS ABOVE JOINT AND WITHIN THE ZONE OF INFLUENCE TO BE PROVIDED WITH 20mm THICK PROMATECT-L BOARDS AS SHOWN
2. TRAY IMMEDIATELY BELOW JOINT TO BE PROVIDED WITH 20mm THICK PROMATECT-L BOARD (TOP ONLY) AS SHOWN
3. CABLE BLANKET PROTECTION ALSO APPLIES TO SECONDARY CABLES
4. NO CABLE BLANKETS TO BE PLACED AROUND CABLE JOINTS.
5. REFER TO 252098, 252099, 252101 AND 252111 FOR DETAILS
6. NOTIFY CABLE RATINGS SECTION THAT CABLES ARE COVERED - ENTRY INTO GIS IS REQUIRED.
7. FOR STANDARD DESIGN AND SAFETY NOTES REFER TO TRIM REFERENCE D20/295304

2 SECTION
252098 SCALE 1:20

AMENDMENTS

AMD	DATE	DESCRIPTION	DRAWN BY	DESIGNED BY	CHECKED BY	APPROVED BY
0	29.06.20	CONSTRUCTION ISSUE	J.ABDILLA	T.VELONAS	J.METTI	K.GALLEN
1	16.09.20	TRIM REFERENCE REVISED	J.ABDILLA	T.VELONAS	J.METTI	K.GALLEN



SCALE	AS SHOWN
DESIGNED	TASS VELONAS
DRAWN	JOSEPH ABDILLA
CHECKED	JOE METTI
APPROVED	KATIN AGALLEN
DATE	06.07.20
TRIM REF	2019/26353

**CABLE BLANKET FIRE PROTECTION
POWER AND SECONDARY CABLES
NEAR CABLE JOINTS
SECTION AT CABLES ON TRAYS
SHEET 3**

ISSUED FOR
CONSTRUCTION

PROJECT NUMBER	SJ-00313
----------------	----------

SIZE
A3

DRAWING No
252100

SHEET	1	AMD	1
-------	----------	-----	----------

CAD DRAWING
DO NOT MANUALLY AMEND
AMENDMENTS