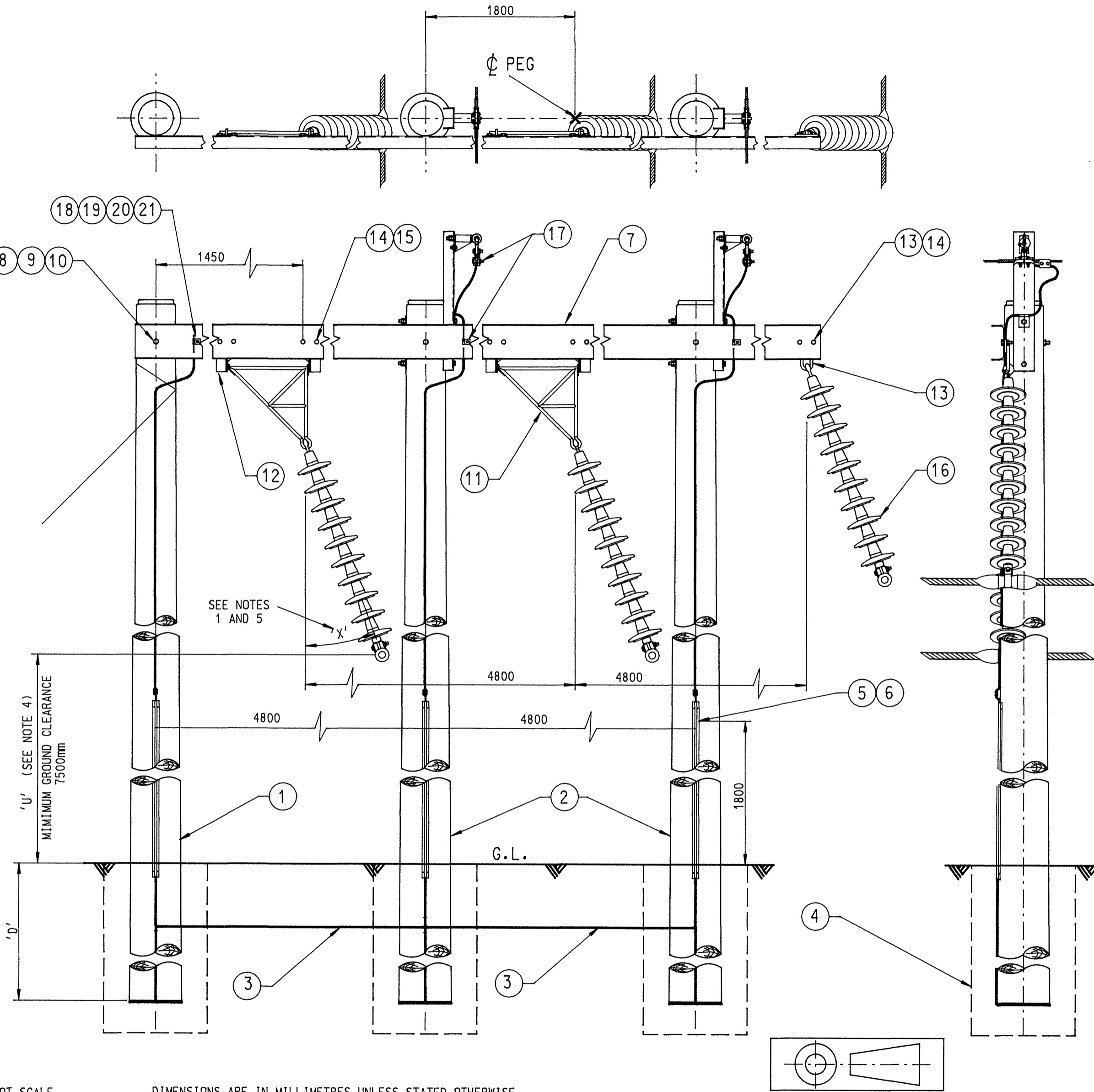


**NOTE:**

1. THE STRUCTURE SHALL BE ERECTED SO THAT POLES ARE VERTICAL, AND THE TOPS OF POLES ARE LEVEL AND THE CROSSARM IS HORIZONTAL.
2. ALL BOLTS THROUGH TIMBER ARE TO BE COATED WITH GRAPHITE GREASE (STOCK CODE 41715).
3. THE FOLLOWING INFORMATION IS OBTAINED FROM THE LINE SCHEDULE:
  - a) POLE LENGTH AND TYPE.
  - b) SPECIAL FOUNDATION REQUIREMENTS.
  - c) VARIATIONS TO STANDARD POLE DEPTH 'D'.
  - d) CONDUCTOR AND OVERHEAD EARTH WIRE.
  - e) STAY REQUIREMENTS.
  - f) DEVIATION ANGLE.
  - g) ASSESSED EARTHING REQUIREMENTS.
4. WHERE THE 250 x 90 CROSSARM AND/OR STAY ARE SPECIFIED THE 26 mm BOLT HOLE IS TO BE COUNTERBORED 50 mm DIAMETER, 50 mm DEEP AND THE COLLAR (ITEM 9) IS TO BE LET INTO THE POLE BEHIND THE CROSSARM.
5. DIMENSION 'U' HAS BEEN CALCULATED USING 10 INSULATORS FOR ITEM 16.
6. CONSTRUCTION IS TO BE WITH 10 DISC PER PHASE UNLESS STATED OTHERWISE.
7. THE MAXIMUM ANGLE OF INSULATOR SWING FOR 10 DISCS IS 66.7° FROM THE VERTICAL. FOR 11 DISCS THE SWING IS TO BE 68.7° AND FOR 12 DISCS THE MAXIMUM ANGLE IS TO BE 70.3°.

POLE LENGTH m	'D' STANDARD DEPTH m	'U' m
14.0	2.00	9.25
15.5	2.15	10.60
17.0	2.30	11.95
18.5	2.45	13.30
20.0	2.60	14.65
21.5	2.75	16.00
23.0	2.90	17.35
24.0	3.00	18.25

21	WASHER, SPRING M12 STAINLESS STEEL	A3-18082	39134	1
20	WASHER, FLAT M12 STAINLESS STEEL	A3-18081	39087	2
19	OFFSET EARTHING CLIP 14mm HOLE	A3-7734	11685	1
18	BOLT AND NUT M12 x 40 mm HEX. GALV.	A3-15467	38536	1
17	OVERHEAD EARTHWIRE SUSPENSION ARRANGEMENT	A2-7790		2
16	OVERHEAD LINE SUSPENSION STRING ARRANGEMENT-2	A2-14043		3
15	WASHER SPRING M20 GALV.	A2-18082	12526	10
14	BOLT AND NUT M20 x 50 mm HEX. GALV.	A3-15467	11407	10
13	DROPPER PLATE	A3-8727	10590	1
12	CLEARANCE HANGER LINK - OFF-SET	A3-7755	10574	2
11	CLEARANCE HANGER BRACKET - SET	A3-7756	10582	2
10	WASHER FLAT M24 GALV.	A3-18081	12178	3
9	COLLAR	A3-7739	10605	3
8	BOLT AND NUT M24 GALV. HEX. (TO SUIT POLE)	A3-15465		3
7	CROSSARM - GALV. 180 x 75mm CHANNEL (RCP-BB-L)	A3-7745	9915	1
	CROSSARM - GALV. 250 x 90mm CHANNEL (RCP-BB-H)	A3-7745		1
6	NAILS, 40 x 2.8mm CLOUT HEAD		41244	as req'd
5	NUMBER PLATE			3
4	TIMBER POLE FOOTING ARRANGEMENT	A3-8726		3
3	MULTIPLE TIMBER POLES EARTHING ARRANGEMENT	A2-20225		2
2	POLE ASSEMBLY TYPE WP-3	A3-7728		2
1	POLE ASSEMBLY TYPE WP-1	A3-7726		1
ITEM	DESCRIPTION	DRG.No.	STOCK CODE	QTY.



DO NOT SCALE DIMENSIONS ARE IN MILLIMETRES UNLESS STATED OTHERWISE.

**CAD DRAWING**  
DO NOT MANUALLY AMEND  
**AMENDMENT NOTES**  
A. INITIAL ISSUE  
OWN: E.C. CHKED: B.W.B.  
E. DATE: 6-1-97  
REDRAWN ON CAD.  
MATERIAL LIST AMENDED.  
AUTH'D BY: G.SKINNER

**A2-507777**

**132 kV TRANSMISSION  
STRUCTURE ASSEMBLY  
WP - BB**

SCALE: 1 : 25  
DATE: 6-1-97  
DRAWN: P.S.  
CHECKED: PAS  
AUTH'D:  
AMENDMENT **E**  
SHEET 1 OF 1

**EnergyAustralia**  
POWER SERVICES  
ENGINEERING CONSULTING-NEWCASTLE  
**7777 A2**

ASSOCIATED DRAWINGS

DRAWING AUTHORISED by  
DATE: 6-1-97

G.SKINNER