

A

B

C

D

E

F

A

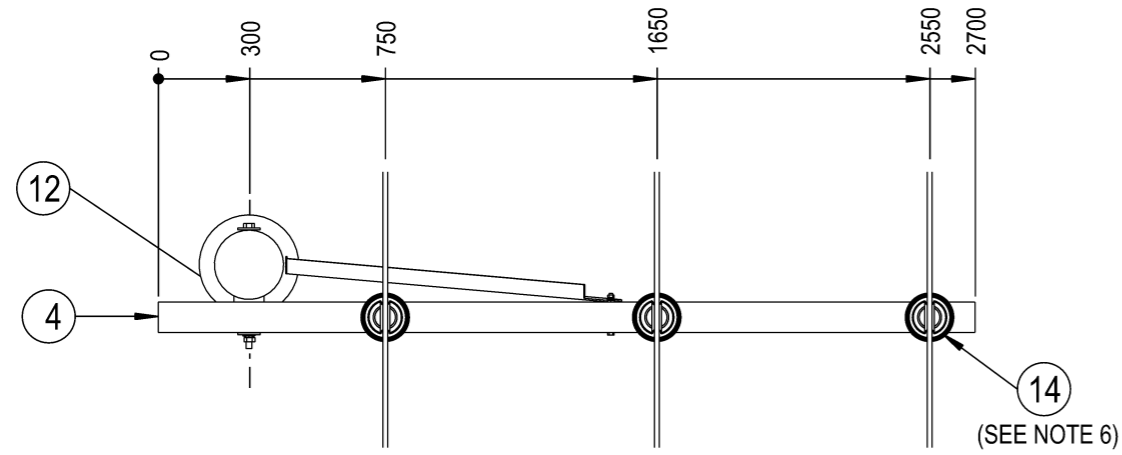
B

C

D

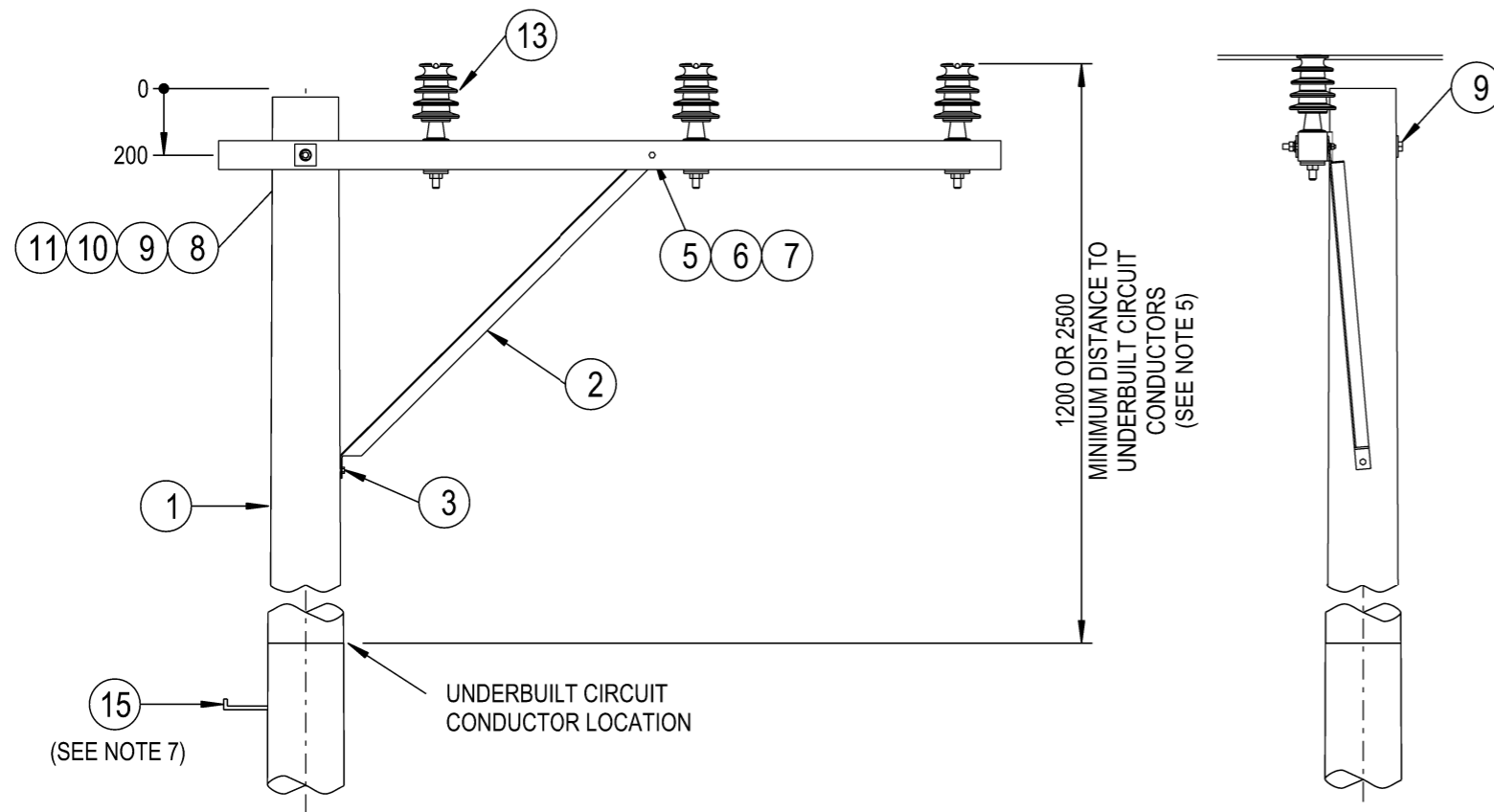
E

F



NOTES :

1. THE FOLLOWING INFORMATION IS OBTAINED FROM THE PROJECT DESIGN DRAWINGS:
 - a. POLE LENGTH AND STRENGTH.
 - b. SPECIAL FOUNDATION REQUIREMENTS.
 - c. POLE EMBEDMENT DEPTH.
 - d. CONDUCTOR SIZE.
 - e. VARIATIONS TO STANDARD CROSSARM REQUIREMENTS.
 - f. STAY REQUIREMENTS.
 - g. DEVIATION ANGLE.
2. THE MAXIMUM LINE DEVIATION ANGLE TO BE CONSTRUCTED ON THIS ARRANGEMENT IS TO BE DETERMINED BY THE LINE DESIGNER.
3. ALL BOLTS AND INSULATOR PINS PASSING THROUGH TIMBER ARE TO BE COATED WITH GRAPHITE GREASE.
4. POLES SHALL BE DRILLED, SCARFED AND DRESSED ON SITE. DRILLING AND SCARFING TO BE TREATED WITH APPROVED PRESERVATIVES.
5. IN AREAS WHERE THE 11KV NETWORK CANNOT BE WORKED ON USING LIVE LINE TECHNIQUES, UNDERBUILT CIRCUITS SHALL BE INSTALLED WITH A MINIMUM CLEARANCE OF 1200mm. IN AREAS WHERE THE 11KV NETWORK CAN BE WORKED ON USING LIVE LINE TECHNIQUES, UNDERBUILT CIRCUITS SHALL BE INSTALLED WITH A MINIMUM CLEARANCE OF 2500mm.
6. IF THE CONDUCTOR DEVIATES AT THE INSULATOR, USE THE ANGLE TYPE CONDUCTOR TIE ARRANGEMENT. OTHERWISE, USE THE INTERMEDIATE TYPE CONDUCTOR TIE ARRANGEMENT AS SHOWN ON DRG: 514038.
7. POLE STEPS ARE TO BE INSTALLED IN ACCORDANCE WITH THE REQUIREMENTS OF NS128.
8. REFER TO DESIGNER SAFETY REPORT D22/312334 FOR ATYPICAL HAZARDS ASSOCIATED WITH THIS STANDARD CONSTRUCTION.



ITEM	DESCRIPTION	DRG. No	STOCK CODE	QTY
15	STEP - POLE, SCREW-IN (SEE NOTE 7)	250144	185198	A/R
14	TIE - CONDUCTOR, HIGH VOLTAGE, SUPPORT ARRANGEMENT (SEE NOTE 6)	514038		4m
13	INSULATOR - 11/22kV AERODYNAMIC, (22/450) & PIN ARRANGEMENT	513997		3
12	BLOCK - GAIN, ALUMINIUM, 100mm		146274	1
11	WASHER - FLAT, M20, GALVANISED	518081	177986	1
10	WASHER - CONICAL, M20, GALVANISED	518082	H39655	1
9	WASHER - SQUARE, 75x75x6mm, GALVANISED (Ø22mm HOLE)	518081	H39231	2
8	BOLT & NUT - M20, HEX., GALVANISED (LENGTH TO SUIT POLE)	515466		1
7	WASHER - CONICAL, M12, GALVANISED	518082	H39639	1
6	WASHER - FLAT, M12, GALVANISED	518081	177982	2
5	BOLT & NUT - M12x130mm, HEX., GALVANISED	515466	46805	1
4	CROSSARM - 2700x100x100mm, TYPE B-2, HARDWOOD	514375	H23656	1
3	SCREW - COACH, M12 x 100mm, GALVANISED		H40484	1
2	BRACE - CROSSARM, ANGLE, 1524x50x50x6mm, GALVANISED	514382	H17291	1
1	POLE - TIMBER (AS REQUIRED)	513988		1



ALL DIMENSIONS IN MILLIMETRES UNLESS NOTED OTHERWISE.

DO NOT SCALE.

CAD DRAWING DO NOT MANUALLY AMEND A M E N D M E N T S	DWN: PATRICIA RIOS	DATE: 03/11/2022 BRACE STRAP POSITION CORRECTED. NOTES & MATERIAL LIST AMENDED.
	CHKD: PHIL JONES	
	DATE: 03/09/2007	
	NOTE 4 AMENDED.	
	APP'D by: STEPHEN CONNOR	
	DWN: PATRICIA RIOS	
	CHKD: PHILLIP JONES	
	DATE: 16/08/2019	
	M20 WASHER ADDED NOTES & MATERIAL LIST AMENDED.	
	APP'D by: GLENN FORD	
	DWN: P.R.	
	CHKD: P.J.	
	APP'D: G.F.	
	14	

NETWORK STANDARD

145 NEWCASTLE RD WALLSEND,
NSW 2287

SCALE	1:25
DESIGNED	-
DRAWN	PATRICIA RIOS
CHECKED	B GRAHAM
APPROVED	R.BREMPELL
DATE	15/03/96
PROJECT NUMBER	STD
PROJTRAK NUMBER	-

STANDARD CONSTRUCTION			
11kV OFFSET ARM			
CONSTRUCTION			
2-2			
SIZE	DRAWING No	SHEET	AMD
A3	513910	1	16