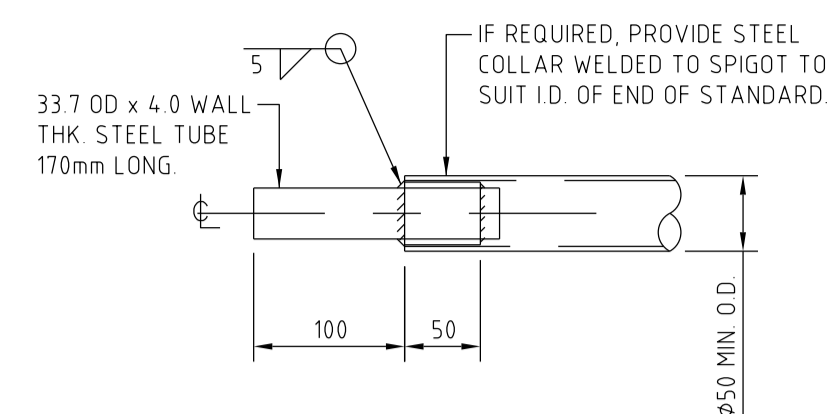
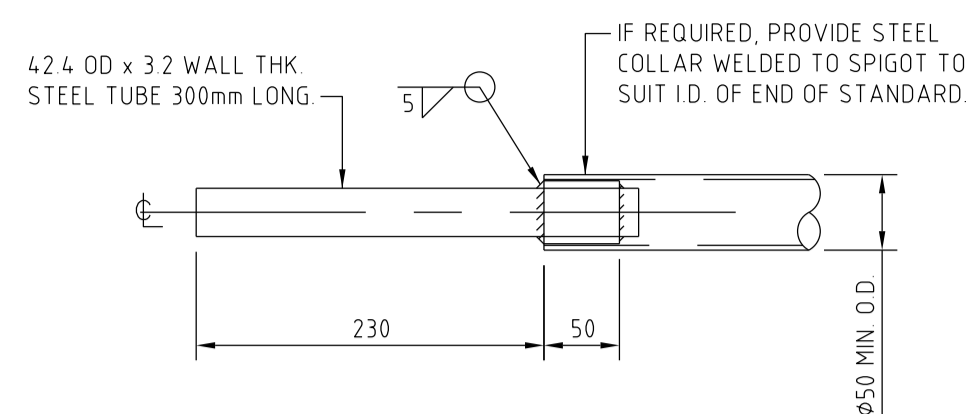


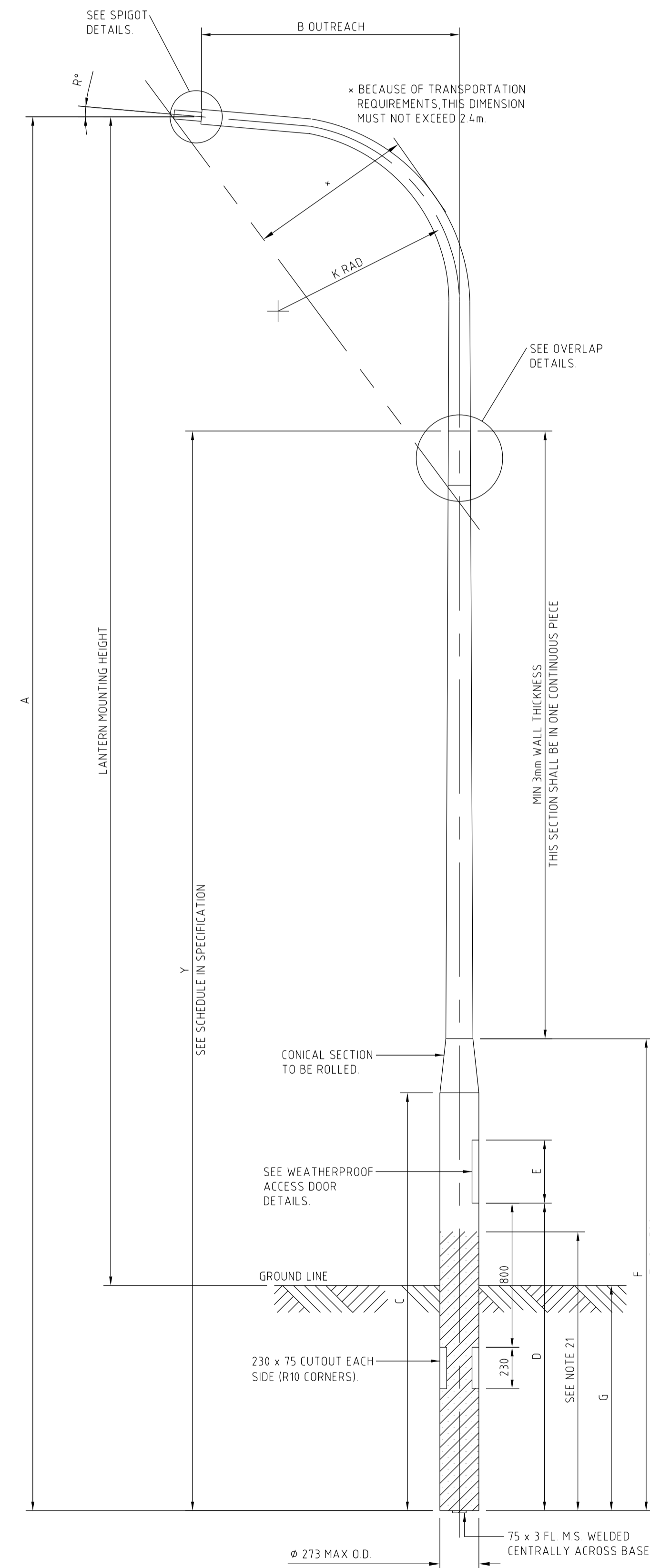
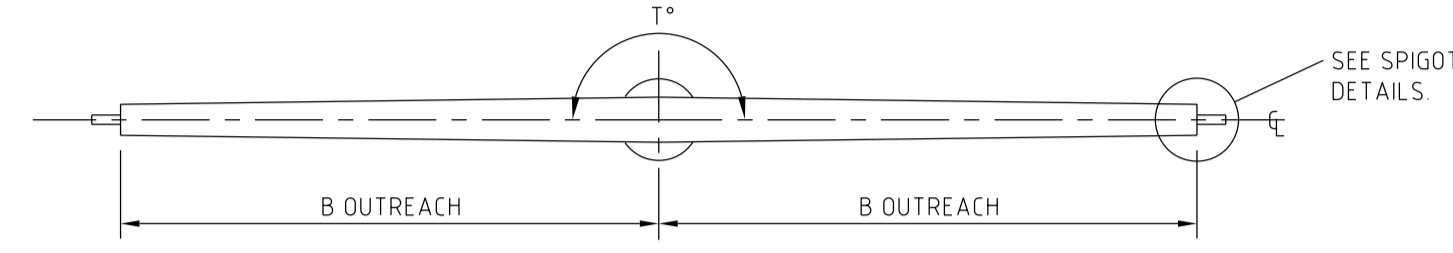
STANDARD LANTERN MOUNTING HEIGHT	DESCRIPTION	STOCK CODE	A mm	B mm	C mm	D mm	E mm	F mm MIN	G mm	H mm MIN	K mm	M mm	N mm	ANGLE R°	ANGLE T°	U REQ'D	REMARKS	
6.5m	6.5m 1 x 2m	71993	7750	2000	2320	1710	420	4.8	1250	180	1000	60	178	5	-	3	A2-42525	SEE REF B - 3
6.5m	6.5m 1 x 3m	72058	7750	3000	2320	1710	420	4.8	1250	180	1000	60	178	5	-	3	A2-42525	SEE REF B - 3
7.5m	7.5m 2 x 2m 180°	108415	9000	2000	3020	1960	610	4.8	1500	210	1500	45	286	5	180	5	B1-24969 A1-56312	SEE REF B - 3
7.5m	7.5m 1 x 2m	79889	9000	2000	3020	1960	610	4.8	1500	210	1500	45	286	5	-	5	B1-24969 A1-56312	SEE REF B - 3
7.5m	7.5m 1 x 3m	184433	9000	3000	3020	1960	610	4.8	1500	210	1500	45	286	5	-	5	B1-24969 A1-56312	SEE REF B - 3
9.0m	9m 1 x 2m	72108	10500	2000	3020	1960	610	4.8	1500	210	1500	45	286	5	-	5	B1-24969 A1-56312	SEE NOTES 19 & 20
9.0m	9m 2 x 2m 180°	184439	10500	2000	3020	1960	610	4.8	1500	210	1500	45	286	5	180	5	B1-24969 A1-56312	SEE NOTES 19 & 20
10.5m	10.5m 1 x 2m	72157	12250	2000	3270	2210	610	4.8	1750	210	1500	45	286	5	-	5	B1-24969 A1-56312	SEE NOTES 19 & 20
10.5m	10.5m 2 x 2m 180°	72173	12250	2000	3270	2210	610	4.8	1750	210	1500	45	286	5	180	5	B1-24969 A1-56312	SEE NOTES 19 & 20
12.0m	12m 1 x 2m	72132	14000	2000	3520	2460	610	4.8	2000	210	1500	45	286	5	-	5	B1-24969 A1-56312	SEE NOTES 19 & 20
12.0m	12m 2 x 2m 180°	184446	14000	2000	3520	2460	610	4.8	2000	210	1500	45	286	5	180	5	B1-24969 A1-56312	SEE NOTES 19 & 20



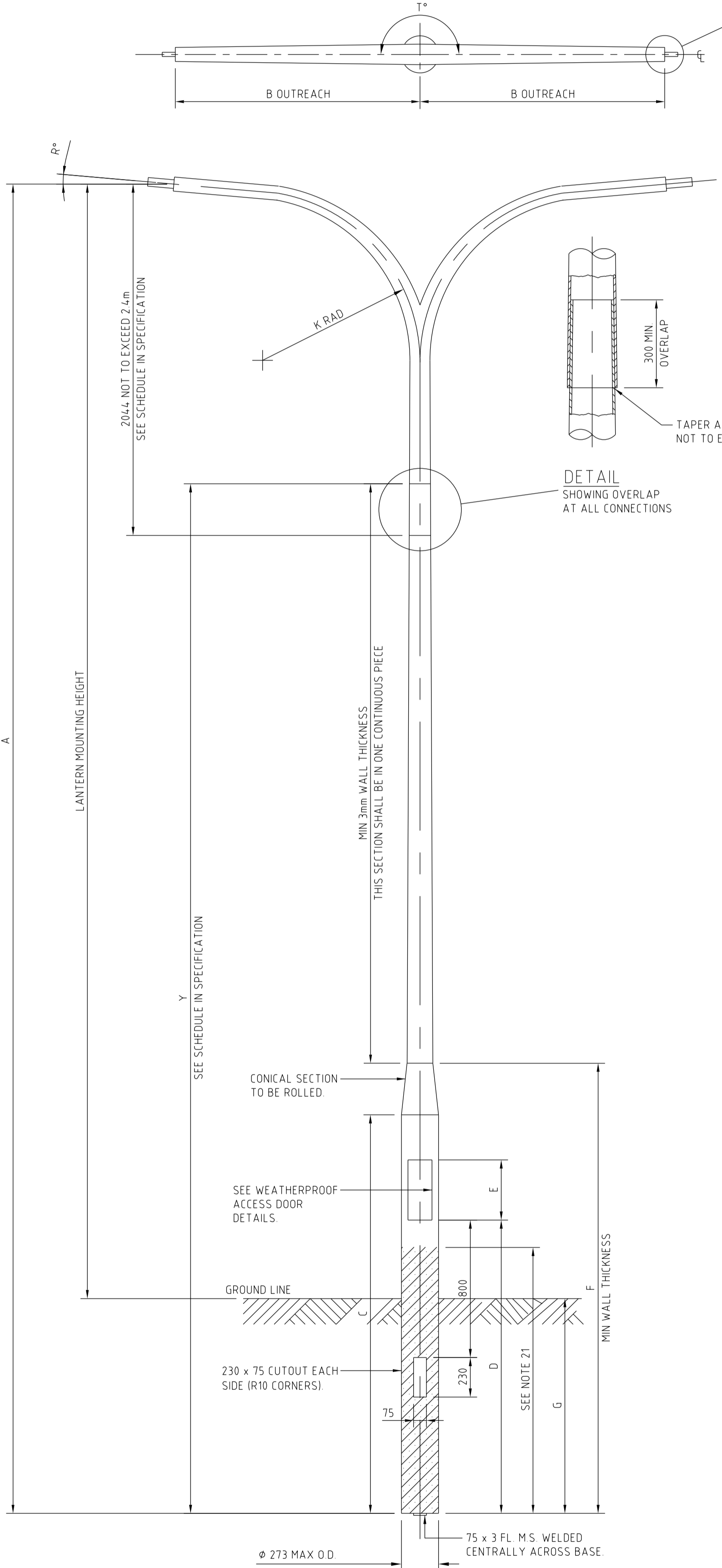
**SPIGOT DETAILS**  
FOR 6.5m & 7.5m STANDARDS ONLY



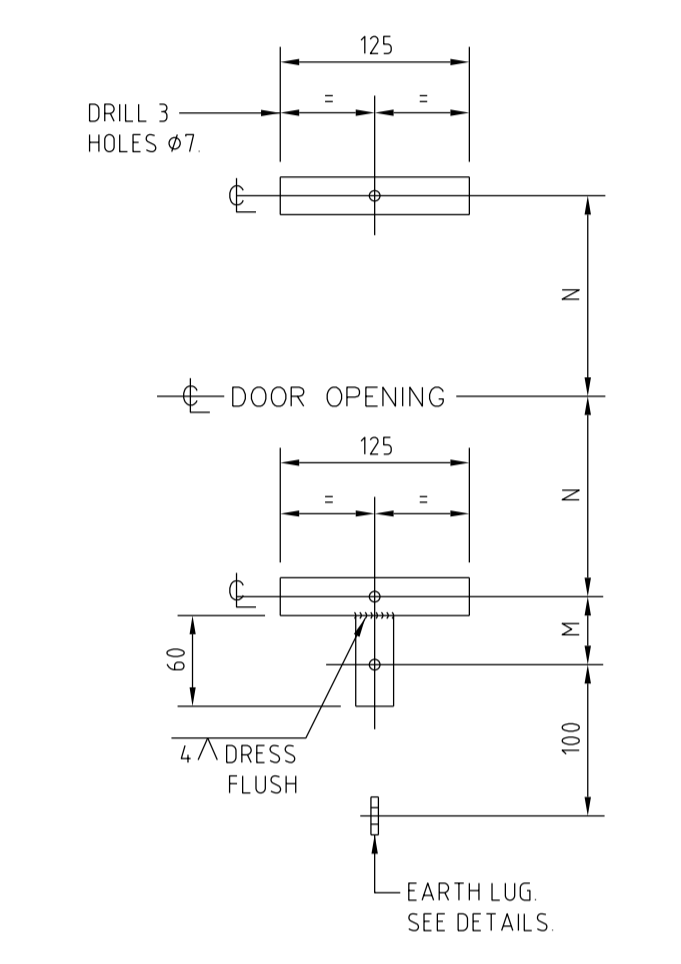
**SPIGOT DETAILS**  
FOR STANDARDS OTHER THAN 6.5m & 7.5m



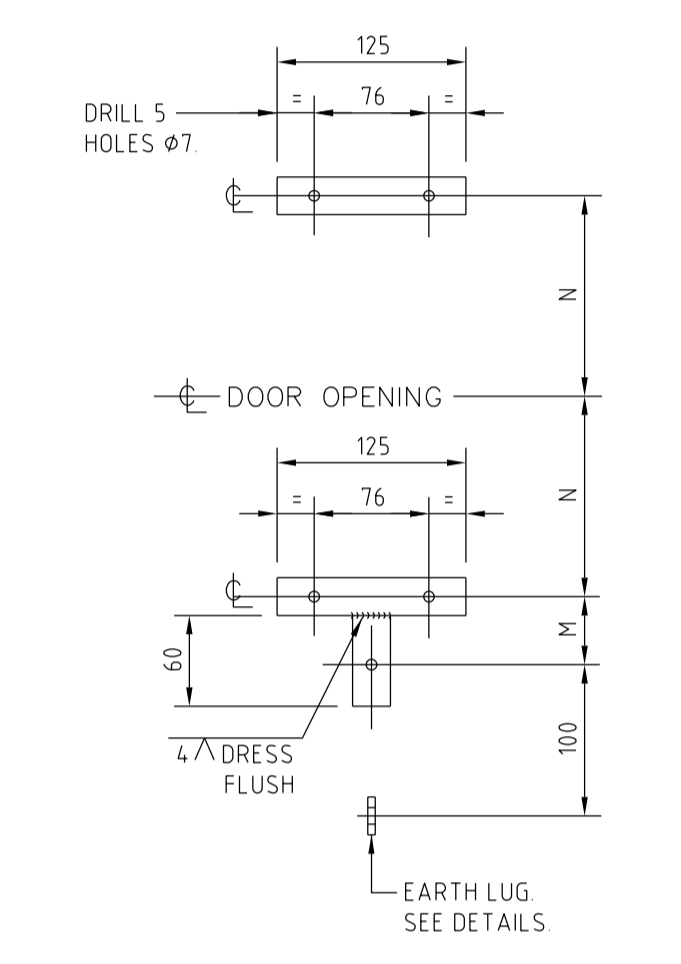
**SINGLE BRACKET ARM**



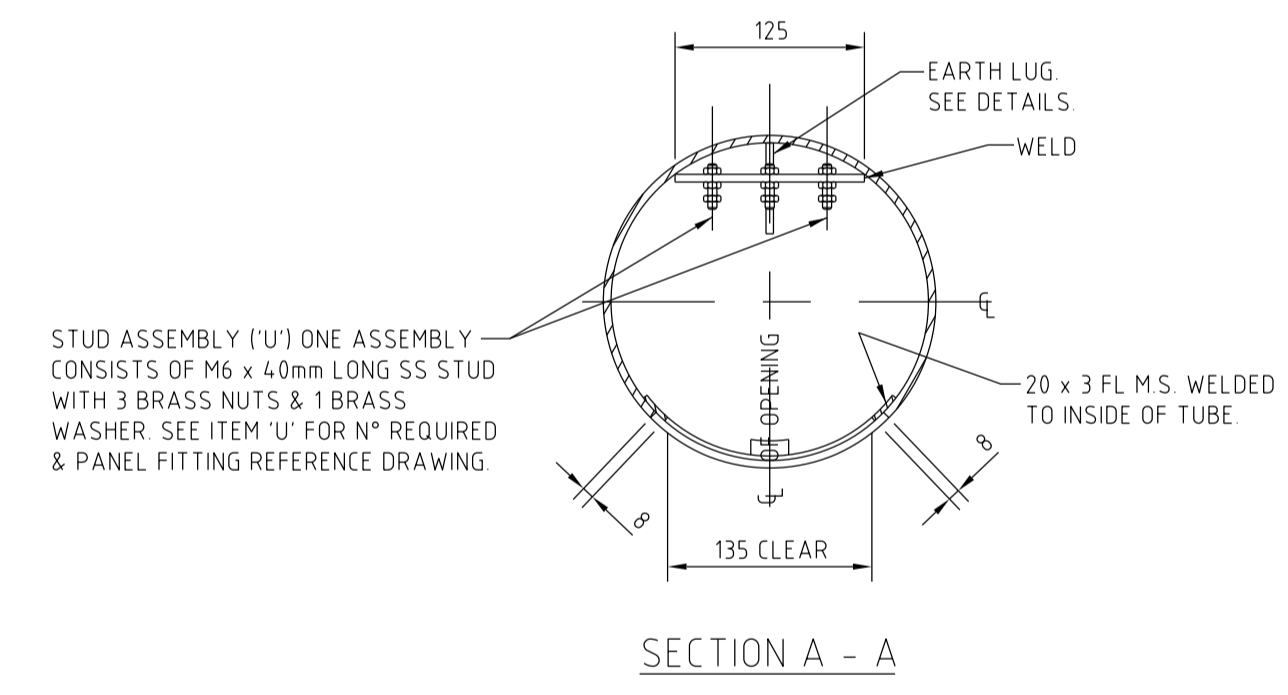
**DOUBLE BRACKET ARM**



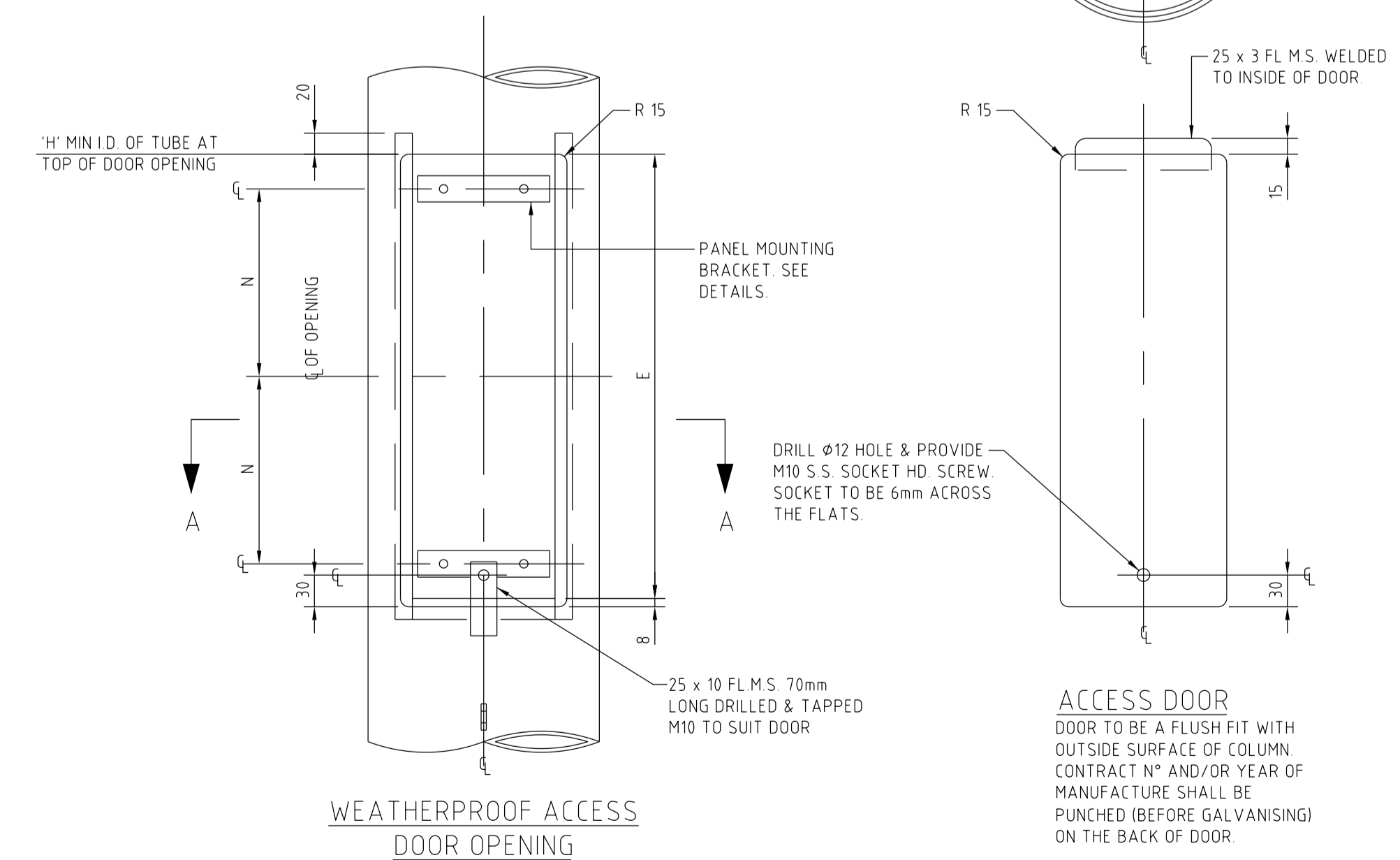
**PANEL MOUNTING BRACKET & EARTH LUG ARRGT & DETAILS**  
MATERIAL 25 x 5mm THK M.S. FOR STANDARDS 6.5m & BELOW



**PANEL MOUNTING BRACKET & EARTH LUG ARRGT & DETAILS**  
MATERIAL 25 x 5mm THK M.S. FOR STANDARDS 7.5m & ABOVE



**SECTION A - A**



**WEATHERPROOF ACCESS DOOR OPENING**

**SAFETY IN DESIGN NOTES**  
THE DESIGNER SAFETY REPORT PREPARED BY AUSGRID DESIGNERS IS INTENDED TO MEET THE REQUIREMENTS OF THE SAFE WORK AUSTRALIA CODE OF PRACTICE JULY 2012 AND THE APPLICABLE NSW WHS 2011 REGULATIONS FOR DESIGNER SAFETY REPORT - 295

- DESIGNER SAFETY REPORT - MECHANICAL WORKS - TRIM REFERENCE D16/145942
- THIS DESIGNER SAFETY REPORT CONSIDERS MECHANICAL DESIGN ISSUES ONLY AND DOES NOT ADDRESS ELECTRICAL, EARTHING ETC WHICH SHOULD BE ADDRESSED BY THE RELEVANT DESIGNER
- STANDARD INDUSTRY HAZARDS & RISKS WILL STILL EXIST WITH THESE DESIGNS BUT MAY NOT BE NOTED IN THE DESIGNER SAFETY REPORT. THE REPORT INCLUDES ONLY UNUSUAL OR ATYPICAL RISKS ASSOCIATED WITH THE DESIGN
- ALL WORK TO BE UNDERTAKEN IN ACCORDANCE WITH WHS LEGISLATION, WORKCOVER REQUIREMENTS, AUSGRID'S ELECTRICAL SAFETY RULES, BE SAFE PROCEDURES, NETWORK STANDARDS AND ALL OTHER SAFETY PLANS/PROCEDURES AND SWMS

**REFERENCE DRAWINGS**

M.E.D LAMP CHOKER PANELS STREET LIGHTING COLUMNS	B1-24969
INSULATED SPIGOT (CLAMPED TYPE) FOR STREET LIGHTING COLUMNS	A2-15959
H.P.S LAMP CHOKER PANELS STREET LIGHTING COLUMNS	A1-56312
6.5m STREET LIGHTING STANDARD LAMP SUPPLY PANEL	A2-62525
STREET LIGHTING COLUMNS WIND LOADING ALLOWABLE CONDITIONS	A2-119244
33.7mm INSULATED SPIGOT CLAMP TYPE FOR STREET LIGHTING COLUMNS	A2-240795

- NOTES**
- ALL STEELWORK TO BE FABRICATED IN ACCORDANCE WITH AS 3990
  - UNLESS NOTED OTHERWISE
    - ALL HOT ROLLED FLATS TO BE GRADE 250 MINIMUM IN ACCORDANCE WITH AS 1594
    - ALL HOT ROLLED SECTIONS TO BE GRADE 250 MINIMUM IN ACCORDANCE WITH AS 3679
    - ALL HOLLOW SECTIONS TO BE GRADE C350 IN ACCORDANCE WITH AS 1163
  - AFTER FABRICATION, ALL BURRS AND SHARP EDGES TO BE REMOVED
  - ALL WELDING TO BE IN ACCORDANCE WITH AS 1554 PART 1
  - CONSUMABLES (ELECTRODES) SHALL BE MATCHED WITH THE STEEL TYPE IN COMPLIANCE WITH AS/NZS 1554.1 TABLE 4.6.1(A) & THE RELEVANT COLUMNS OF THE TABLE DEPENDING ON THE TYPE OF WELDING PROCESS BEING UNDERTAKEN
  - UNLESS NOTED OTHERWISE
    - ALL WELDS SHALL BE 6mm CONTINUOUS FILLET WELDS, CATEGORY GP
    - BUTT WELDS SHALL BE CONTINUOUS FULL PENETRATION, CATEGORY SP
    - ALL WELDS TO BE CARRIED OUT IN THE SHOP UNLESS NOTED AS 'WELD ON SITE'
  - WELDS SHALL BE INSPECTED TO AS/NZS 1554.1 CLAUSE 7.3 (VISUAL INSPECTION OF WORK) UNLESS THE WELDING PROCESS IS SUPERVISED AND CARRIED OUT BY QUALIFIED PERSONNEL AS DEFINED IN AS/NZS 1554.1 CLAUSE 4.12.1 AND CLAUSE 4.12.2
  - AFTER FABRICATION, ALL WELDS TO BE CHIPPED FREE OF SLAG
  - AFTER FABRICATION, ALL STEELWORK TO BE HOT DIP GALVANISED TO AS 4680
  - AFTER GALVANISING, ALL HOLES TO BE CLEARED AND SHARP EDGES TO BE REMOVED
  - WHERE THE GALVANISING FINISH HAS BEEN DAMAGED, AREA TO BE TREATED WITH COLD GALVANISING PAINT SIMILAR TO ZINCIFIX COATINGS TO BE APPLIED IN ACCORDANCE WITH THE MANUFACTURERS INSTRUCTIONS
  - ALL BOLTS, NUTS AND WASHERS TO BE HOT DIP GALVANISED TO AS 1214
  - EACH SECTION OF COLUMN SHALL BE MADE FROM ONE CONTINUOUS LENGTH OF TUBE. SECTIONS JOINED BY WELDING WILL NOT BE ACCEPTED
  - ALL WELDED JOINTS TO BE SEAL WELDED
  - DRAWING TO BE READ IN CONJUNCTION WITH ASSOCIATED SPECIFICATION
  - WEATHERPROOF ACCESS DOOR FOR 6.5m MODIFIED COLUMNS STOCK CODE NO 0Y0723 ONLY, IS TO BE LOCATED ON THE SIDE UNDER THE BRACKET ARM OUTREACH OPPOSITE AS SHOWN
  - TOLERANCING IS TO BE IN ACCORDANCE WITH AS 1798
  - COLUMNS SHALL BE CAPABLE OF SUPPORTING THE LANTERN MASS & WITHSTANDING THE WINDFORCES TO AS 1170.2 & AS SPECIFIED ON DRAWING A2-118244
  - WHEN REQUIRED, FIT A 1m EXTENSION BRACKET DRG A2-65411 TO 2m OUTREACH STANDARDS TO CREATE A 3m OUTREACH ARM
  - ALL STRESS & DEFLECTION CALCULATIONS FOR COLUMNS 9.0m OR GREATER WITH A 2m OUTREACH TO BE MADE ON THE ASSUMPTION THAT A 1m EXTENSION (DRG A2-65411) HAS BEEN ADDED i.e. OUTREACH IS 3 METRES
  - COAT BASE FROM BOTTOM TO 300mm ABOVE GROUND LINE WITH 2 COATS OF 125MICRONS THICK DULUX "DUREBILD 5 TE" EPOXY MASTIC

**CAD DRAWING**  
DO NOT MANUALLY AMEND

**AMENDMENTS**

NO	DATE	DESCRIPTION
18	21/02/2013	DRAWING BORDER UPDATED
19	21/02/2013	STOCK CODE FOR 7.5m x 2 x 2m STANDARDS ADDED. NOTES UPDATED
20	21/02/2013	STOCK CODE FOR 6.5m x 2 x 2m STANDARDS ADDED. NOTES UPDATED
21	21/02/2013	STOCK CODE FOR 6.5m x 1 x 2m STANDARDS ADDED. NOTES CLARIFIED
22	21/02/2013	STOCK CODE FOR 6.5m x 1 x 3m STANDARDS ADDED. NOTES CLARIFIED
23	21/02/2013	STOCK CODE FOR 7.5m x 2 x 2m 180° STANDARDS ADDED. NOTES CLARIFIED
24	21/02/2013	STOCK CODE FOR 7.5m x 1 x 2m STANDARDS ADDED. NOTES CLARIFIED
25	21/02/2013	STOCK CODE FOR 7.5m x 1 x 3m STANDARDS ADDED. NOTES CLARIFIED
26	21/02/2013	STOCK CODE FOR 9.0m x 1 x 2m STANDARDS ADDED. NOTES CLARIFIED
27	21/02/2013	STOCK CODE FOR 9.0m x 2 x 2m 180° STANDARDS ADDED. NOTES CLARIFIED
28	21/02/2013	STOCK CODE FOR 10.5m x 1 x 2m STANDARDS ADDED. NOTES CLARIFIED
29	21/02/2013	STOCK CODE FOR 10.5m x 2 x 2m 180° STANDARDS ADDED. NOTES CLARIFIED
30	21/02/2013	STOCK CODE FOR 12.0m x 1 x 2m STANDARDS ADDED. NOTES CLARIFIED
31	21/02/2013	STOCK CODE FOR 12.0m x 2 x 2m 180° STANDARDS ADDED. NOTES CLARIFIED

DATE: 28/07/2023  
STOCK CODE AMENDMENTS FOR 6.5m x 2 x 2m LANTERN MOUNTING

2011014	1	2	3	4	5	6	7	8	9	10	11	12	13	14	15	16
MECHANICAL DESIGN 570 GEORGE STREET SYDNEY NSW 2000	SCALE DESIGNED DRAWN CHECKED APPROVED DATE TRIM REF PROJECT NUMBER	1 : 5 , 20 COLIN SAWDY K.E.M. J.H. 03.12.1986 2016/2589 22048	STREET LIGHTING STEEL CURVED BRACKET ARM STANDARDS SINGLE AND DOUBLE BRACKET ARMS IN-GROUND MOUNTED LIMITING DIMENSIONS										DRAWING No 66272	SHEET 1	AMD 21	SIZE B1

**Ausgrid**  
NETWORK STANDARD

MECHANICAL DESIGN  
570 GEORGE STREET  
SYDNEY NSW 2000

SCALE	1 : 5 , 20
DESIGNED	COLIN SAWDY
DRAWN	K.E.M.
CHECKED	J.H.
APPROVED	03.12.1986
DATE	2016/2589
TRIM REF	22048
PROJECT NUMBER	DRAWING No 66272
	SHEET 1
	AMD 21
	SIZE B1

