

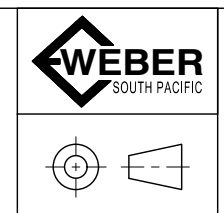
- NOTES**
- THE LV ASSEMBLY IS DEAD FRONT WITH FLEXIBLE INSULATING BOOTS FITTED TO DISTRIBUTOR TERMINALS. ASSEMBLY IS IP21 FROM THE TOP ONLY. THE COVERS DO NOT PROTECT PURPOSEFUL TOUCH FROM UNDERNEATH.
  - PHASE IDENTIFICATION
    - T (Top) - L1 - RED
    - M (Middle) - L2 - WHITE
    - B (Bottom) - L3 - BLUE
  - WIRE COLOURS -
    - RD - RED
    - BL - BLUE
    - WH - WHITE
    - BK - BLACK
    - OR - ORANGE
    - GY - GREY
    - GN/YE - GREEN/YELLOW
  - FUSE LINKS ARE NOT PROVIDED.

# AUSGRID : 265242-2

NOT FOR CONSTRUCTION

REV	DATE	DESCRIPTION	DWN	APP
B	03/07/2023	ADDED GPO	P.W	J.J
A	28/02/2023	INITIAL SINGLE LINE	P.W	J.J

PROJECT: AUSGRID CHAMBER - STOCKCODE: 181790  
 ASSEMBLY ID: VF224209-AUS04  
 DESCRIPTION: 2500A TXF DISCONNECTOR + 1X800A S/F + 3X400A F/S  
 RATINGS: 2000A, 415V, 30kA 3s, FORM 1, IP (NOTE 1)  
 INSTALLATION TYPE: LV CHAMBER SUBSTATION



**WEBER SOUTH PACIFIC PTY LTD**  
 PO BOX 4264 Eight Mile Plains  
 Queensland Australia  
 TEL. (07) 3841 6899  
 FAX. (07) 3841 6877  
 EMAIL- sales@webersouthpacific.com.au

Scale: NTS  
 DO NOT SCALE  
 Tolerance: N/A  
 ALL DIMENSIONS IN MM UNLESS NOTED OTHERWISE

Standard: AS/NZS 61439.2  
 Drawing: SINGLE LINE  
 SHEET 1 OF 1

Client: AUSGRID  
 Part Number: VF224209-AUS04  
 Drawing Number: 00015-SL20  
 Size: A3  
 Type: 2D  
 Revision: B