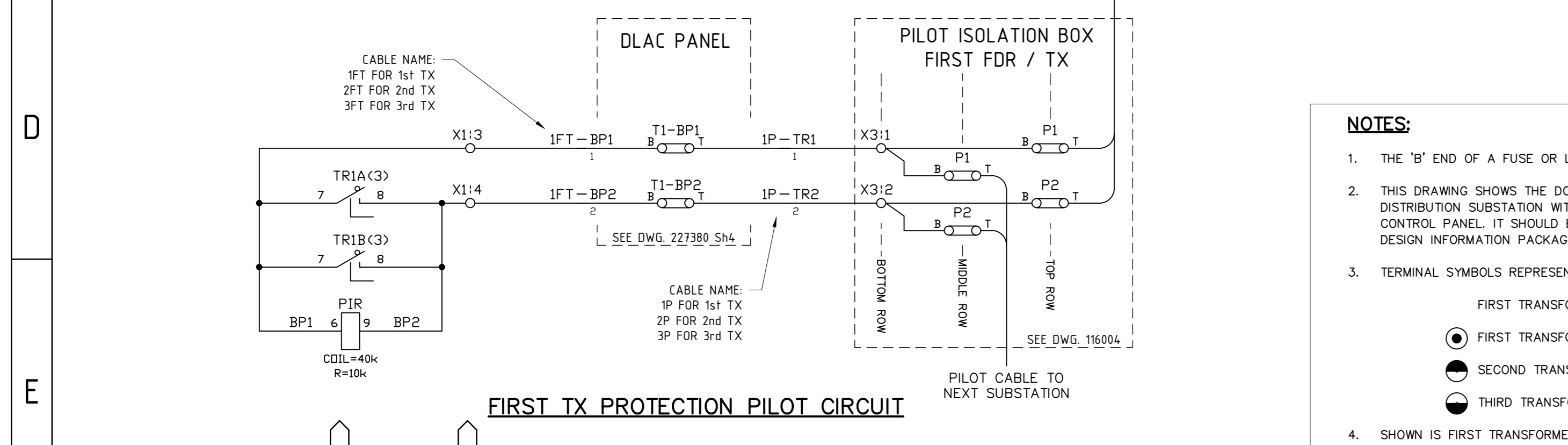
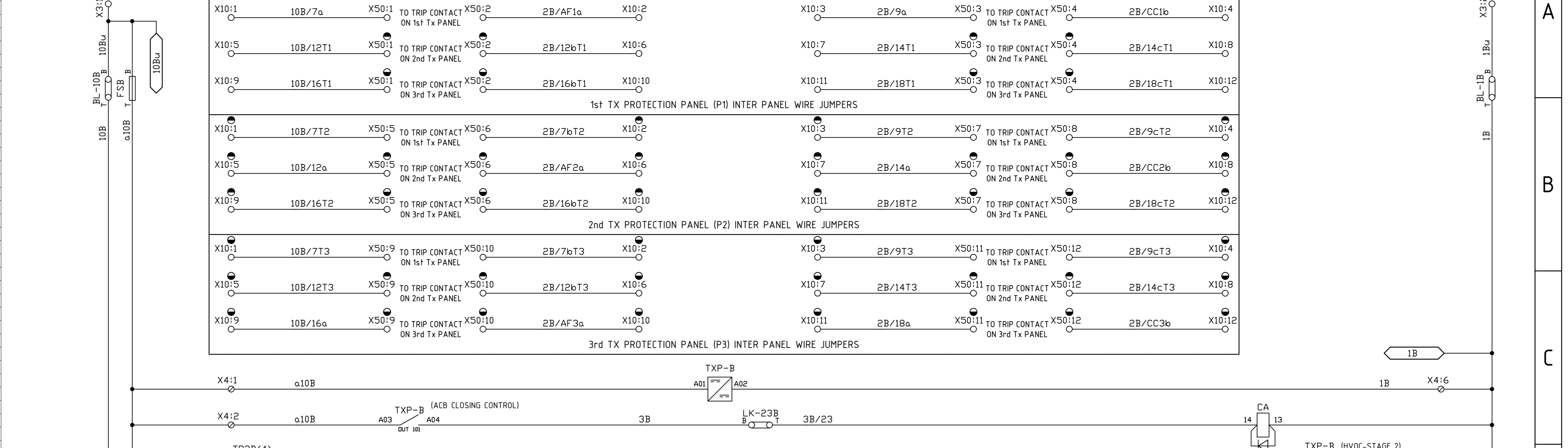
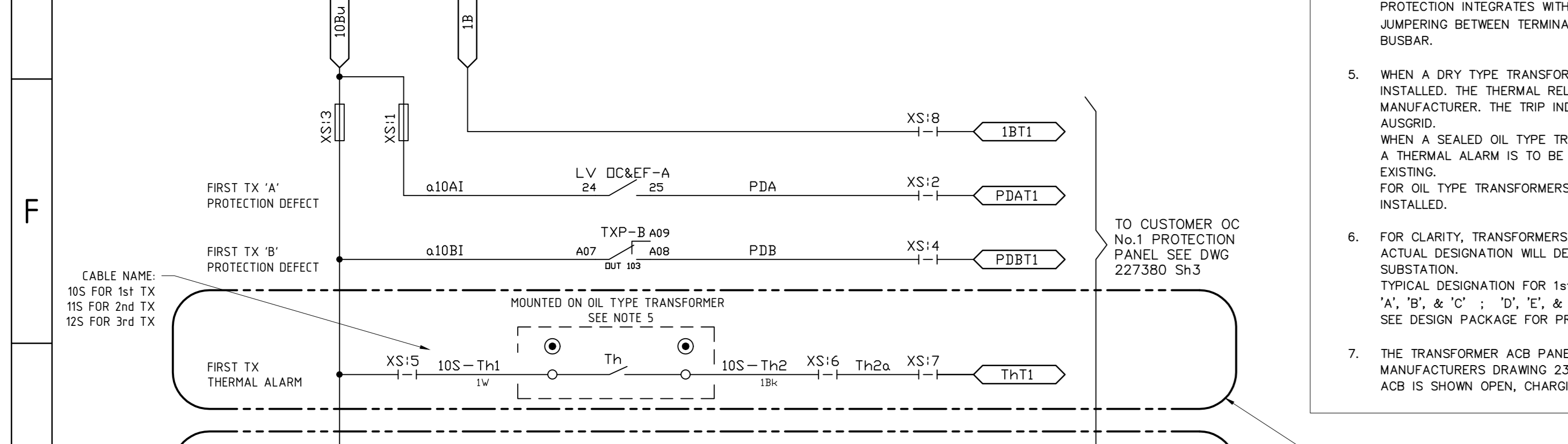


DC TEST LINK FUNCTION TABLE

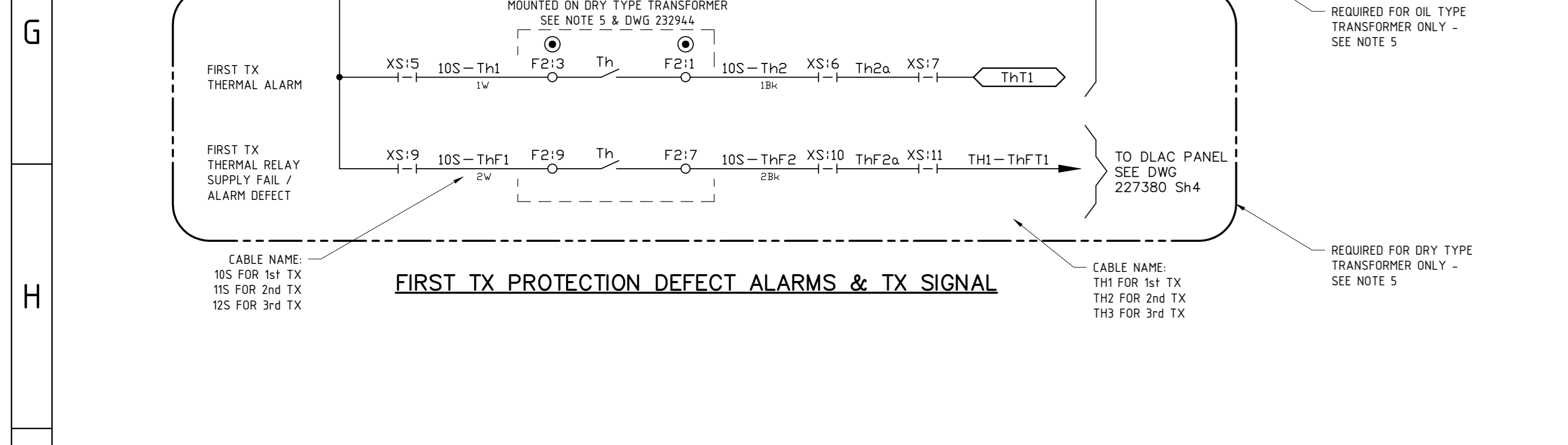
LINK No.	LINK FUNCTION
BL-7B	FIRST TX ARC FLASH - BATTERY LINK
BL-12B	SECOND TX ARC FLASH - BATTERY LINK
BL-16B	THIRD TX ARC FLASH - BATTERY LINK
BL-20B	ARC FLASH BYPASS NORMALLY OPEN - BATTERY LINK
LK-2A, 2B	TX PROTECTION MULTITRIP TRIA (TR1B) - TRIP LINK
LK-2Ba	TX BUCHHOLZ - TRIP LINK
LK-3A, 3B	TX PROTECTION MULTITRIP TR2A (TR2B) - TRIP LINK
LK-4B	TX THERMAL - TRIP LINK
LK-5B	CUSTOMER OC No.1 - TRIP LINK
LK-6B	CUSTOMER OC No.2 - TRIP LINK
LK-8B	FIRST TX ARC FLASH - TRIP LINK
LK-9B	FIRST TX CURRENT - CHECK LINK
LK-10B	FIRST TX CURRENT CHECK - TRIP LINK
LK-15B	SECOND TX ARC FLASH - TRIP LINK
LK-14B	SECOND TX CURRENT CHECK - LINK
LK-15B	SECOND TX CURRENT CHECK - TRIP LINK
LK-17B	THIRD TX ARC FLASH - TRIP LINK
LK-18B	THIRD TX CURRENT CHECK - LINK
LK-19B	THIRD TX CURRENT CHECK - TRIP LINK
LK-21B	CO-GENERATION OPEN TX ACB - TRIP LINK
LK-22B	PILOT INTERLOCK OPEN TX ACB - TRIP LINK
LK-23B	TX ACB CLOSE RELAY - LINK
LK-24B	11kV FEEDER IN SERVICE - CHECK LINK
LK-25B	TX PROTECTION OPERATED - LINK
LK-26B	TX PROTECTION OPERATED CHECK - LINK
LK-27B	TX ACB STATUS - LINK
LK-28B	TX ACB STATUS CHECK - LINK
LK-29B	TX ACB READY TO CLOSE - LINK



- NOTES:**
1. THE 'B' END OF A FUSE OR LINK (THIS) INDICATES THE BOTTOM CONNECTION.
 2. THIS DRAWING SHOWS THE DC PROTECTION & CONTROL SCHEMATIC FOR A TRANSFORMER IN A CITY DISTRIBUTION SUBSTATION WITH OPTICAL ARC FLASH DETECTION AND A DISTRIBUTION LOCAL AUTOMATION CONTROL PANEL. IT SHOULD BE READ IN CONJUNCTION WITH NETWORK STANDARDS AND THE SUBSTATION DESIGN INFORMATION PACKAGE.
 3. TERMINAL SYMBOLS REPRESENT LOCATION OF TERMINALS.
FIRST TRANSFORMER PROTECTION PANEL
● FIRST TRANSFORMER CONNECTION BOX
● SECOND TRANSFORMER PROTECTION PANEL
● THIRD TRANSFORMER PROTECTION PANEL
 4. SHOWN IS FIRST TRANSFORMER PROTECTION PANEL WITH OPTICAL ARC FLASH DETECTION. EACH TRANSFORMER PROTECTION INTEGRATES WITH THE OTHER. EACH PROTECTION PANEL ON SITE, BY WIRE JUMPERING BETWEEN TERMINAL RA1S X10 & X50 TO PROTECT ITS RELEVANT TRANSFORMER AND THE 415V BUSBAR.
 5. WHEN A DRY TYPE TRANSFORMER IS USED THE THERMAL RELAY (Th) AND A TRIP INDICATOR ARE TO BE INSTALLED. THE THERMAL RELAY IS LOCATED & SUPPLIED ON THE TRANSFORMER BY THE TRANSFORMER MANUFACTURER. THE TRIP INDICATOR IS LOCATED ON THE TRANSFORMER PROTECTION PANEL & IS SUPPLIED BY AUSGRID. WHEN A SEALED OIL TYPE TRANSFORMER IS USED THE THERMAL RELAY & TRIP INDICATORS ARE NOT REQUIRED. A THERMAL ALARM IS TO BE INSTALLED ACTIVATED BY A MECHANICAL GAUGE FROM THE TRANSFORMER. FOR OIL TYPE TRANSFORMERS WITH A BUCHHOLZ TYPE RELAY THE BUCHHOLZ TRIP ARRANGEMENT IS TO BE INSTALLED.
 6. FOR CLARITY, TRANSFORMERS ARE REFERENCED AS 1st TRANSFORMER & 2nd TRANSFORMER & 3rd TRANSFORMER. ACTUAL DESIGNATION WILL DEPEND ON WHICH CITY TRIPLEX FEEDERS ARE SUPPLYING THE DISTRIBUTION SUBSTATION. TYPICAL DESIGNATION FOR 1st, 2nd, & 3rd TRANSFORMERS ARE: 'A', 'B', & 'C'; 'D', 'E', & 'F'; 'G', 'H', & 'J'; or 'X', 'Y', & 'W' SEE DESIGN PACKAGE FOR PROJECT DETAIL.
 7. THE TRANSFORMER ACB PANELS (ACB INCLUDED) ARE TO BE WIRED TO MATCH AUSGRID DRAWING 227390-1 & MANUFACTURERS DRAWING 234374-1



- NOTES:**
1. THE 'B' END OF A FUSE OR LINK (THIS) INDICATES THE BOTTOM CONNECTION.
 2. THIS DRAWING SHOWS THE DC PROTECTION & CONTROL SCHEMATIC FOR A TRANSFORMER IN A CITY DISTRIBUTION SUBSTATION WITH OPTICAL ARC FLASH DETECTION AND A DISTRIBUTION LOCAL AUTOMATION CONTROL PANEL. IT SHOULD BE READ IN CONJUNCTION WITH NETWORK STANDARDS AND THE SUBSTATION DESIGN INFORMATION PACKAGE.
 3. TERMINAL SYMBOLS REPRESENT LOCATION OF TERMINALS.
FIRST TRANSFORMER PROTECTION PANEL
● FIRST TRANSFORMER CONNECTION BOX
● SECOND TRANSFORMER PROTECTION PANEL
● THIRD TRANSFORMER PROTECTION PANEL
 4. SHOWN IS FIRST TRANSFORMER PROTECTION PANEL WITH OPTICAL ARC FLASH DETECTION. EACH TRANSFORMER PROTECTION INTEGRATES WITH THE OTHER. EACH PROTECTION PANEL ON SITE, BY WIRE JUMPERING BETWEEN TERMINAL RA1S X10 & X50 TO PROTECT ITS RELEVANT TRANSFORMER AND THE 415V BUSBAR.
 5. WHEN A DRY TYPE TRANSFORMER IS USED THE THERMAL RELAY (Th) AND A TRIP INDICATOR ARE TO BE INSTALLED. THE THERMAL RELAY IS LOCATED & SUPPLIED ON THE TRANSFORMER BY THE TRANSFORMER MANUFACTURER. THE TRIP INDICATOR IS LOCATED ON THE TRANSFORMER PROTECTION PANEL & IS SUPPLIED BY AUSGRID. WHEN A SEALED OIL TYPE TRANSFORMER IS USED THE THERMAL RELAY & TRIP INDICATORS ARE NOT REQUIRED. A THERMAL ALARM IS TO BE INSTALLED ACTIVATED BY A MECHANICAL GAUGE FROM THE TRANSFORMER. FOR OIL TYPE TRANSFORMERS WITH A BUCHHOLZ TYPE RELAY THE BUCHHOLZ TRIP ARRANGEMENT IS TO BE INSTALLED.
 6. FOR CLARITY, TRANSFORMERS ARE REFERENCED AS 1st TRANSFORMER & 2nd TRANSFORMER & 3rd TRANSFORMER. ACTUAL DESIGNATION WILL DEPEND ON WHICH CITY TRIPLEX FEEDERS ARE SUPPLYING THE DISTRIBUTION SUBSTATION. TYPICAL DESIGNATION FOR 1st, 2nd, & 3rd TRANSFORMERS ARE: 'A', 'B', & 'C'; 'D', 'E', & 'F'; 'G', 'H', & 'J'; or 'X', 'Y', & 'W' SEE DESIGN PACKAGE FOR PROJECT DETAIL.
 7. THE TRANSFORMER ACB PANELS (ACB INCLUDED) ARE TO BE WIRED TO MATCH AUSGRID DRAWING 227390-1 & MANUFACTURERS DRAWING 234374-1



- NOTES:**
1. THE 'B' END OF A FUSE OR LINK (THIS) INDICATES THE BOTTOM CONNECTION.
 2. THIS DRAWING SHOWS THE DC PROTECTION & CONTROL SCHEMATIC FOR A TRANSFORMER IN A CITY DISTRIBUTION SUBSTATION WITH OPTICAL ARC FLASH DETECTION AND A DISTRIBUTION LOCAL AUTOMATION CONTROL PANEL. IT SHOULD BE READ IN CONJUNCTION WITH NETWORK STANDARDS AND THE SUBSTATION DESIGN INFORMATION PACKAGE.
 3. TERMINAL SYMBOLS REPRESENT LOCATION OF TERMINALS.
FIRST TRANSFORMER PROTECTION PANEL
● FIRST TRANSFORMER CONNECTION BOX
● SECOND TRANSFORMER PROTECTION PANEL
● THIRD TRANSFORMER PROTECTION PANEL
 4. SHOWN IS FIRST TRANSFORMER PROTECTION PANEL WITH OPTICAL ARC FLASH DETECTION. EACH TRANSFORMER PROTECTION INTEGRATES WITH THE OTHER. EACH PROTECTION PANEL ON SITE, BY WIRE JUMPERING BETWEEN TERMINAL RA1S X10 & X50 TO PROTECT ITS RELEVANT TRANSFORMER AND THE 415V BUSBAR.
 5. WHEN A DRY TYPE TRANSFORMER IS USED THE THERMAL RELAY (Th) AND A TRIP INDICATOR ARE TO BE INSTALLED. THE THERMAL RELAY IS LOCATED & SUPPLIED ON THE TRANSFORMER BY THE TRANSFORMER MANUFACTURER. THE TRIP INDICATOR IS LOCATED ON THE TRANSFORMER PROTECTION PANEL & IS SUPPLIED BY AUSGRID. WHEN A SEALED OIL TYPE TRANSFORMER IS USED THE THERMAL RELAY & TRIP INDICATORS ARE NOT REQUIRED. A THERMAL ALARM IS TO BE INSTALLED ACTIVATED BY A MECHANICAL GAUGE FROM THE TRANSFORMER. FOR OIL TYPE TRANSFORMERS WITH A BUCHHOLZ TYPE RELAY THE BUCHHOLZ TRIP ARRANGEMENT IS TO BE INSTALLED.
 6. FOR CLARITY, TRANSFORMERS ARE REFERENCED AS 1st TRANSFORMER & 2nd TRANSFORMER & 3rd TRANSFORMER. ACTUAL DESIGNATION WILL DEPEND ON WHICH CITY TRIPLEX FEEDERS ARE SUPPLYING THE DISTRIBUTION SUBSTATION. TYPICAL DESIGNATION FOR 1st, 2nd, & 3rd TRANSFORMERS ARE: 'A', 'B', & 'C'; 'D', 'E', & 'F'; 'G', 'H', & 'J'; or 'X', 'Y', & 'W' SEE DESIGN PACKAGE FOR PROJECT DETAIL.
 7. THE TRANSFORMER ACB PANELS (ACB INCLUDED) ARE TO BE WIRED TO MATCH AUSGRID DRAWING 227390-1 & MANUFACTURERS DRAWING 234374-1



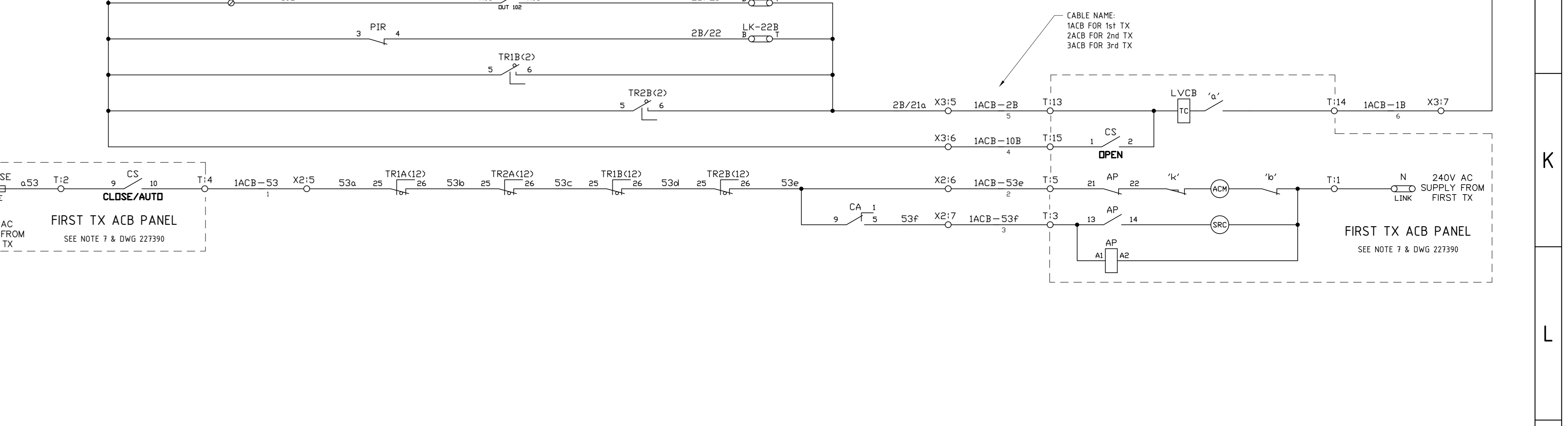
- NOTES:**
1. THE 'B' END OF A FUSE OR LINK (THIS) INDICATES THE BOTTOM CONNECTION.
 2. THIS DRAWING SHOWS THE DC PROTECTION & CONTROL SCHEMATIC FOR A TRANSFORMER IN A CITY DISTRIBUTION SUBSTATION WITH OPTICAL ARC FLASH DETECTION AND A DISTRIBUTION LOCAL AUTOMATION CONTROL PANEL. IT SHOULD BE READ IN CONJUNCTION WITH NETWORK STANDARDS AND THE SUBSTATION DESIGN INFORMATION PACKAGE.
 3. TERMINAL SYMBOLS REPRESENT LOCATION OF TERMINALS.
FIRST TRANSFORMER PROTECTION PANEL
● FIRST TRANSFORMER CONNECTION BOX
● SECOND TRANSFORMER PROTECTION PANEL
● THIRD TRANSFORMER PROTECTION PANEL
 4. SHOWN IS FIRST TRANSFORMER PROTECTION PANEL WITH OPTICAL ARC FLASH DETECTION. EACH TRANSFORMER PROTECTION INTEGRATES WITH THE OTHER. EACH PROTECTION PANEL ON SITE, BY WIRE JUMPERING BETWEEN TERMINAL RA1S X10 & X50 TO PROTECT ITS RELEVANT TRANSFORMER AND THE 415V BUSBAR.
 5. WHEN A DRY TYPE TRANSFORMER IS USED THE THERMAL RELAY (Th) AND A TRIP INDICATOR ARE TO BE INSTALLED. THE THERMAL RELAY IS LOCATED & SUPPLIED ON THE TRANSFORMER BY THE TRANSFORMER MANUFACTURER. THE TRIP INDICATOR IS LOCATED ON THE TRANSFORMER PROTECTION PANEL & IS SUPPLIED BY AUSGRID. WHEN A SEALED OIL TYPE TRANSFORMER IS USED THE THERMAL RELAY & TRIP INDICATORS ARE NOT REQUIRED. A THERMAL ALARM IS TO BE INSTALLED ACTIVATED BY A MECHANICAL GAUGE FROM THE TRANSFORMER. FOR OIL TYPE TRANSFORMERS WITH A BUCHHOLZ TYPE RELAY THE BUCHHOLZ TRIP ARRANGEMENT IS TO BE INSTALLED.
 6. FOR CLARITY, TRANSFORMERS ARE REFERENCED AS 1st TRANSFORMER & 2nd TRANSFORMER & 3rd TRANSFORMER. ACTUAL DESIGNATION WILL DEPEND ON WHICH CITY TRIPLEX FEEDERS ARE SUPPLYING THE DISTRIBUTION SUBSTATION. TYPICAL DESIGNATION FOR 1st, 2nd, & 3rd TRANSFORMERS ARE: 'A', 'B', & 'C'; 'D', 'E', & 'F'; 'G', 'H', & 'J'; or 'X', 'Y', & 'W' SEE DESIGN PACKAGE FOR PROJECT DETAIL.
 7. THE TRANSFORMER ACB PANELS (ACB INCLUDED) ARE TO BE WIRED TO MATCH AUSGRID DRAWING 227390-1 & MANUFACTURERS DRAWING 234374-1

REFERENCE DRAWINGS

TITLE	DWG No.
EPPOXY RESIN ENCASED PROTECTION CURRENT TRANSFORMER OUTLINE AND DETAILS	125190
RMCB SUBSTATIONS WITH E TYPE LV BOARD WITH OPTICAL ARC FLASH DETECTION FIBRE LOOPING AND GENERAL MOUNTING DETAILS	227350 SH5
CITY DISTRIBUTION SUBSTATIONS WITH E TYPE LV BOARD AND DAFO CUSTOMER ACB INTERNAL WIRING AND ACB PANEL CONTROL WIRING SCHEMATIC	227390 SH2
CITY DISTRIBUTION SUBSTATIONS WITH E TYPE LV BOARD AND DAFO TRANSFORMER ACB INTERNAL WIRING AND ACB PANEL CONTROL WIRING SCHEMATIC	227390 SH1
CITY DISTRIBUTION SUBSTATIONS WITH E TYPE LV BOARD, DAFO, & CUSTOMER OC NOT PROTECTION, DISTRIBUTION AUTOMATION CONTROL PANEL WIRING & CABLING DIAGRAM	227389 SH1
CITY DISTRIBUTION SUBSTATIONS WITH E TYPE LV BOARD, DAFO, & CUSTOMER OC No.1 & No.2 PROTECTION, DISTRIBUTION AUTOMATION CONTROL PANEL WIRING & CABLING	227389 SH1
CITY DISTRIBUTION SUBSTATIONS WITH E TYPE LV BOARD AND DAFO DISTRIBUTION LOCAL AUTOMATION CONTROL PANEL LAYOUT AND LABEL DETAILS	227388 SH1
CITY DISTRIBUTION SUBSTATIONS WITH E TYPE LV BOARD AND DAFO 1500kVA TX'S AND VENTILATION FAN AC SERVICE BOARD LAYOUT, WIRING, & CONNECTIONS	227387 SH1
CITY DISTRIBUTION SUBSTATIONS WITH E TYPE LV BOARD AND OPTICAL ARC FLASH DETECTION CABLE SCHEDULE	227386 SH2
CITY DISTRIBUTION SUBSTATIONS WITH E TYPE LV BOARD AND OPTICAL ARC FLASH DETECTION CABLING DIAGRAM	227386 SH1
CITY DISTRIBUTION SUBSTATIONS WITH E TYPE LV BOARD AND DAFO CUSTOMER OC No.1 (No.2) PROTECTION PANEL WIRING AND CABLE CONNECTIONS	227385 SH1
CITY DISTRIBUTION SUBSTATIONS WITH E TYPE LV BOARD, OIL TYPE TX, & DAFO, TRANSFORMER PROTECTION PANEL CABLE CONNECTION DIAGRAM	227384 SH2
CITY DISTRIBUTION SUBSTATIONS WITH E TYPE LV BOARD, OIL TYPE TX, & DAFO, TRANSFORMER PROTECTION PANEL CABLE CONNECTION DIAGRAM	227384 SH1
CITY DISTRIBUTION SUBSTATIONS WITH E TYPE LV BOARD, OIL TYPE TX, & DAFO, TRANSFORMER PROTECTION PANEL WIRING DIAGRAM	227383 SH2
CITY DISTRIBUTION SUBSTATIONS WITH E TYPE LV BOARD, DRY TYPE TX, & DAFO, TRANSFORMER PROTECTION PANEL WIRING DIAGRAM	227383 SH1
CITY DISTRIBUTION SUBSTATIONS WITH E TYPE LV BOARD, DAFD, TRANSFORMERS AND CUSTOMER OVERCURRENT PROTECTION FREE STANDING PANELS LABEL DETAILS	227382 SH1
CITY DISTRIBUTION SUBSTATIONS WITH OPTICAL ARC FLASH DETECTION (E TYPE LV) TRANSFORMERS AND CUSTOMER OVERCURRENT FREE STANDING PANELS LAYOUT DETAILS	227381 SH1
CITY DISTRIBUTION SUBSTATIONS WITH E TYPE LV BOARD AND DAFO, DLAC PANEL SCHEMATIC, GENERAL DC SUPPLIES INTER-PANEL WIRING, FIBRE COMPS & CABLING DIAGRAM	227380 SH4
CITY DISTRIBUTION SUBSTATIONS WITH E TYPE LV BOARD AND OPTICAL ARC FLASH DETECTION CUSTOMER OVERCURRENT DC SCHEMATIC	227380 SH3
CITY DISTRIBUTION SUBSTATIONS WITH E TYPE LV BOARD, & OPTICAL ARC FLASH DETECTION TRANSFORMER DC SCHEMATIC	227380 SH2
CITY DISTRIBUTION SUBSTATIONS WITH E TYPE LV BOARD AND OPTICAL ARC FLASH DETECTION AC SCHEMATIC	227380 SH1

LEGEND

TAGNAME	MFG	CATNO	DESC	REF_DWG
BL_LK	EUGAGUP	Moulded Type MS	BATTERY TEST LINK	507111
CA	IDEC	IR2B-ULD 48V DC	AUXILIARY RELAY WITH BASE SH2B-05C	161975
DIFF	-	K3M	3 ELEMENT FUSE RELAY	115243
FSA, FSB	ALSTOM	RS20P Black	FUSE - 2 STD BACK CONNECTED	-
LV DCKEF-A	SCHNEIDER ELECT	MICOM P115	OVERCURRENT & EARTH FAULT RELAY	225082
PIR	RMS	PIR	PILOT INTERLOCK RELAY	53629
TR1B, TR2B	RMS	TR12-CD-22	LATCHING MULTITRIP RELAY 48V DC	223206 SH1 & 2
TR1A, TR2A	RMS	TR12-80-22	LATCHING MULTITRIP RELAY 32V DC	223206 SH1 & 2
TXP-B	SCHWEITZER	SEL-751	TRANSFORMER PROTECTION RELAY	-
TI-1	RMS	3A32K37	TRIP INDICATOR FOR TI-3 (0.2 ohm)	123399
Th	-	-	THERMAL RELAY (SEE NOTE 5)	-
AP	-	-	ANTI-PUMP RELAY (ACB PANEL)	234374-1
ACM	-	-	AC MOTOR FOR SPRING CHARGING (ACB INTERNAL)	234374-1
CS	-	-	CONTROL SWITCH (ACB PANEL)	234374-1
SRC	-	-	SPRING RELEASE COIL (ACB INTERNAL)	234374-1
TC	-	-	TRIP COIL (ACB INTERNAL)	234374-1
'a'	-	-	AUXILIARY SWITCH (Open when CB Open)	234374-1
'b'	-	-	AUXILIARY SWITCH (Closed when CB Open)	234374-1
'c'	-	-	AUXILIARY SWITCH (Spring Charge)	234374-1
PPR	-	-	READY TO CLOSE CONTACT (ACB INTERNAL)	234374-1
T	UTILUX	3820	RAIL MOUNTED TERMINAL (ACB PANEL)	224374-1
X1, X3, X10, X50	UTILUX	3820	RAIL MOUNTED TERMINAL	198547
X2	UTILUX	H2238	RAIL MOUNTED TERMINAL - ORANGE	-
X4	WEDMULLER	SAK25	RAIL MOUNTED TERMINAL CAT No. 27966	-
X5	WEDMULLER	ASK1	RAIL MOUNTED FUSE CAT No. 37678	-
X5	WEDMULLER	SAKR	RAIL MOUNTED ISOLATING TERM CAT No. 47226	-



REFERENCE DRAWINGS

TITLE	DWG No.
EPPOXY RESIN ENCASED PROTECTION CURRENT TRANSFORMER OUTLINE AND DETAILS	125190
RMCB SUBSTATIONS WITH E TYPE LV BOARD WITH OPTICAL ARC FLASH DETECTION FIBRE LOOPING AND GENERAL MOUNTING DETAILS	227350 SH5
CITY DISTRIBUTION SUBSTATIONS WITH E TYPE LV BOARD AND DAFO CUSTOMER ACB INTERNAL WIRING AND ACB PANEL CONTROL WIRING SCHEMATIC	227390 SH2
CITY DISTRIBUTION SUBSTATIONS WITH E TYPE LV BOARD AND DAFO TRANSFORMER ACB INTERNAL WIRING AND ACB PANEL CONTROL WIRING SCHEMATIC	227390 SH1
CITY DISTRIBUTION SUBSTATIONS WITH E TYPE LV BOARD, DAFO, & CUSTOMER OC NOT PROTECTION, DISTRIBUTION AUTOMATION CONTROL PANEL WIRING & CABLING DIAGRAM	227389 SH1
CITY DISTRIBUTION SUBSTATIONS WITH E TYPE LV BOARD, DAFO, & CUSTOMER OC No.1 & No.2 PROTECTION, DISTRIBUTION AUTOMATION CONTROL PANEL WIRING & CABLING	227389 SH1
CITY DISTRIBUTION SUBSTATIONS WITH E TYPE LV BOARD AND DAFO DISTRIBUTION LOCAL AUTOMATION CONTROL PANEL LAYOUT AND LABEL DETAILS	227388 SH1
CITY DISTRIBUTION SUBSTATIONS WITH E TYPE LV BOARD AND DAFO 1500kVA TX'S AND VENTILATION FAN AC SERVICE BOARD LAYOUT, WIRING, & CONNECTIONS	227387 SH1
CITY DISTRIBUTION SUBSTATIONS WITH E TYPE LV BOARD AND OPTICAL ARC FLASH DETECTION CABLE SCHEDULE	227386 SH2
CITY DISTRIBUTION SUBSTATIONS WITH E TYPE LV BOARD AND OPTICAL ARC FLASH DETECTION CABLING DIAGRAM	227386 SH1
CITY DISTRIBUTION SUBSTATIONS WITH E TYPE LV BOARD AND DAFO CUSTOMER OC No.1 (No.2) PROTECTION PANEL WIRING AND CABLE CONNECTIONS	227385 SH1
CITY DISTRIBUTION SUBSTATIONS WITH E TYPE LV BOARD, OIL TYPE TX, & DAFO, TRANSFORMER PROTECTION PANEL CABLE CONNECTION DIAGRAM	227384 SH2
CITY DISTRIBUTION SUBSTATIONS WITH E TYPE LV BOARD, OIL TYPE TX, & DAFO, TRANSFORMER PROTECTION PANEL CABLE CONNECTION DIAGRAM	227384 SH1
CITY DISTRIBUTION SUBSTATIONS WITH E TYPE LV BOARD, OIL TYPE TX, & DAFO, TRANSFORMER PROTECTION PANEL WIRING DIAGRAM	227383 SH2
CITY DISTRIBUTION SUBSTATIONS WITH E TYPE LV BOARD, DRY TYPE TX, & DAFO, TRANSFORMER PROTECTION PANEL WIRING DIAGRAM	227383 SH1
CITY DISTRIBUTION SUBSTATIONS WITH E TYPE LV BOARD, DAFD, TRANSFORMERS AND CUSTOMER OVERCURRENT PROTECTION FREE STANDING PANELS LABEL DETAILS	227382 SH1
CITY DISTRIBUTION SUBSTATIONS WITH OPTICAL ARC FLASH DETECTION (E TYPE LV) TRANSFORMERS AND CUSTOMER OVERCURRENT FREE STANDING PANELS LAYOUT DETAILS	227381 SH1
CITY DISTRIBUTION SUBSTATIONS WITH E TYPE LV BOARD AND DAFO, DLAC PANEL SCHEMATIC, GENERAL DC SUPPLIES INTER-PANEL WIRING, FIBRE COMPS & CABLING DIAGRAM	227380 SH4
CITY DISTRIBUTION SUBSTATIONS WITH E TYPE LV BOARD AND OPTICAL ARC FLASH DETECTION CUSTOMER OVERCURRENT DC SCHEMATIC	227380 SH3
CITY DISTRIBUTION SUBSTATIONS WITH E TYPE LV BOARD, & OPTICAL ARC FLASH DETECTION TRANSFORMER DC SCHEMATIC	227380 SH2
CITY DISTRIBUTION SUBSTATIONS WITH E TYPE LV BOARD AND OPTICAL ARC FLASH DETECTION AC SCHEMATIC	227380 SH1

Ausgrid

24 Campbell Street
SYDNEY NSW 2000
P. 9272 3805

ISSUED FOR CONSTRUCTION

SCALE: DESIGNED NTS
DRAWN: L.MARTINUZZI / E.KAIROUZ
CHECKED: C.MURPHY
APPROVED: C.MURPHY
DATE: 17/06/2015
TRIM REF: -

PROJECT NUMBER: OPEX-06923
DRAWING No: 227380
SHEET 2
AMD 2
SIZE A0

CITY DISTRIBUTION SUBSTATIONS WITH E TYPE LV BOARD, & OPTICAL ARC FLASH DETECTION TRANSFORMER DC SCHEMATIC