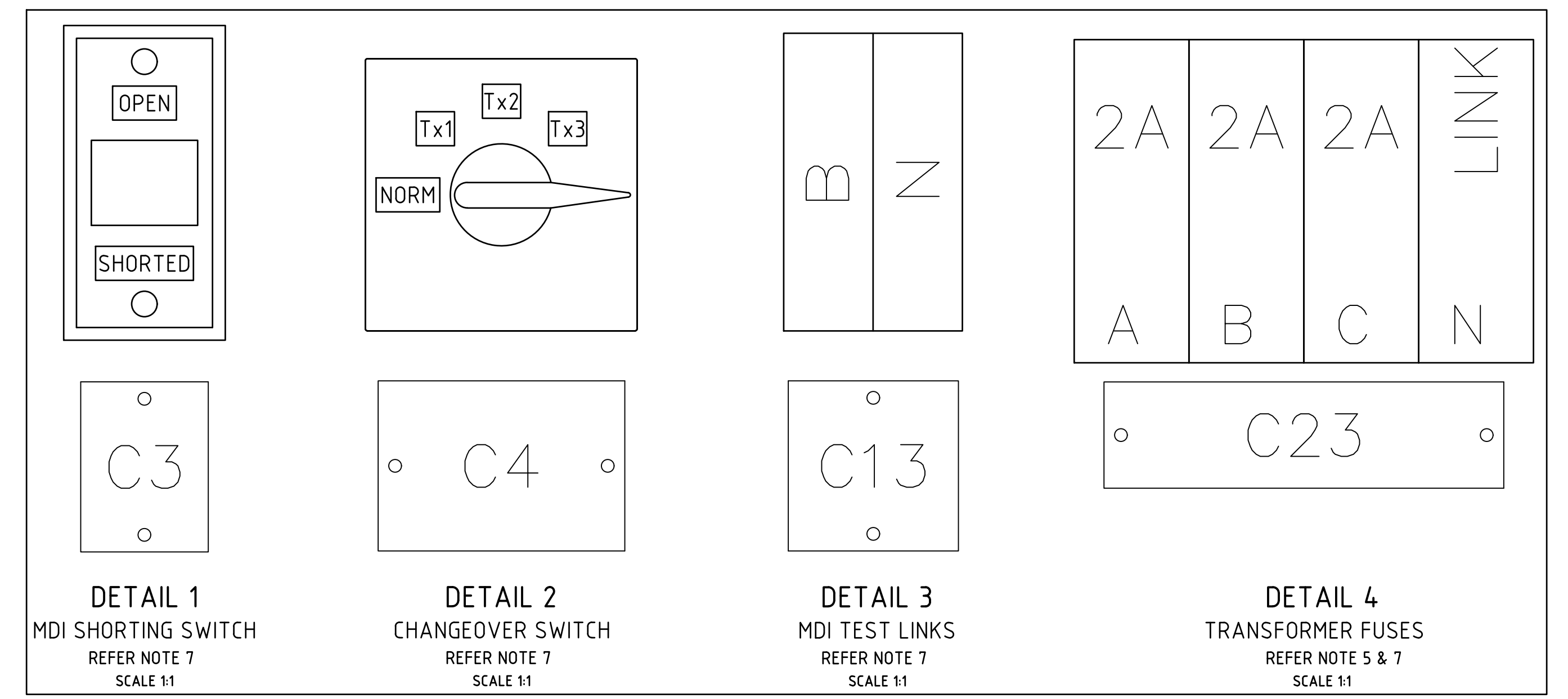
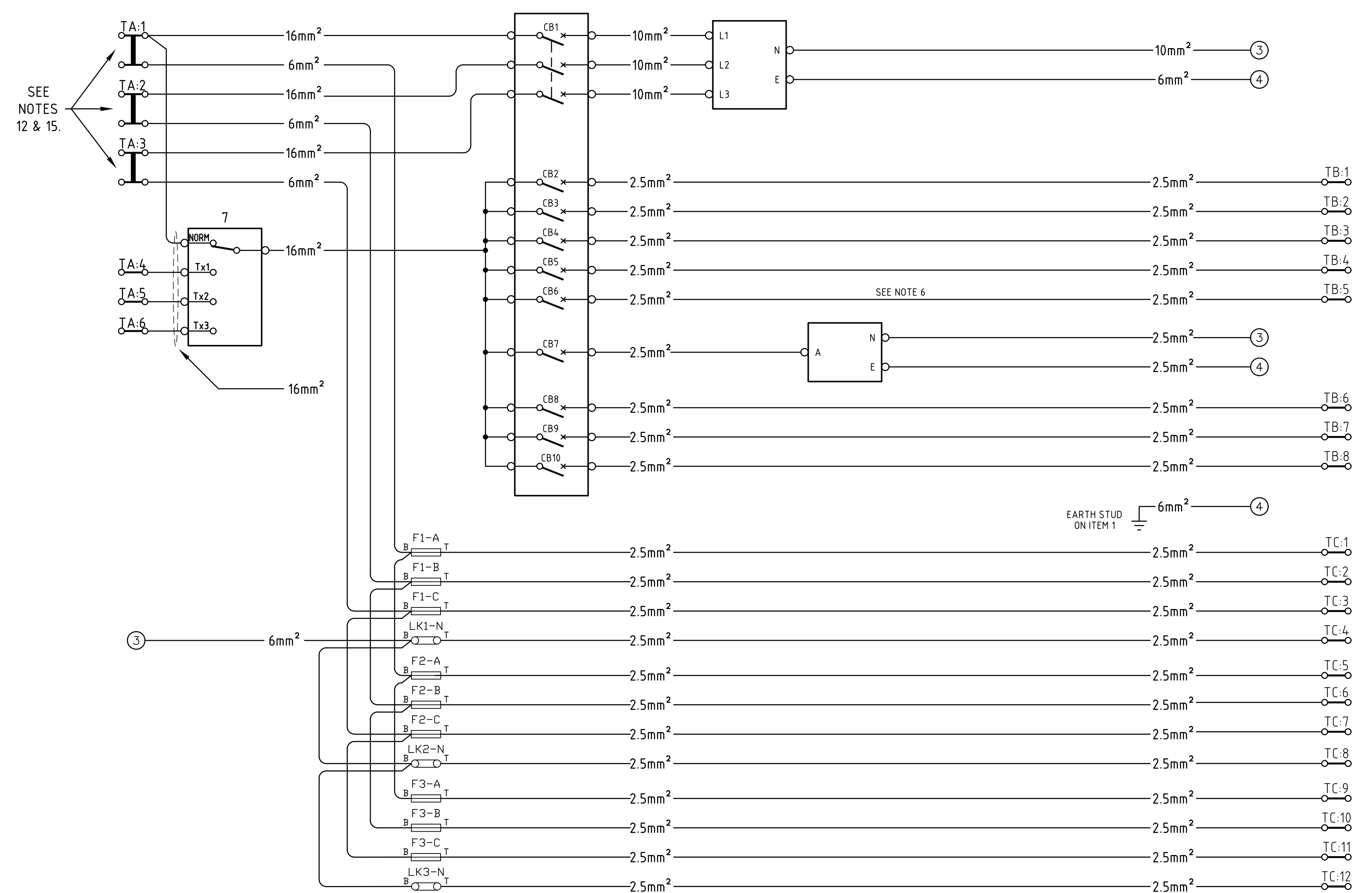


LABEL DETAILS						
LABEL	LABEL SIZE	COLOUR	TEXT LINE	TEXT HEIGHT	ENGRAVING	QTY
1	C3	GRAVOPLY No.200 WHITE/BLACK	LINE 1 LINE 2 LINE 3	2.5 2.5 2.5	MDI SHORTING SWITCH	1
2	C4	GRAVOPLY No.200 WHITE/BLACK	LINE 1 LINE 2 LINE 3	2.5 2.5 2.5	ESSENTIAL SERVICES STANDBY SUPPLY CHANGEOVER SWITCH	1
3	C13	GRAVOPLY No.259 PINE GREEN/WHITE	LINE 1 LINE 2 LINE 3	4.0 2.5 2.5	B M N TEST LINKS	1
4	C23	GRAVOPLY No.259 PINE GREEN/WHITE	LINE 1 LINE 2 LINE 3	4.0 2.5 2.5	A B C N TRANSFORMER # BUSBAR CHECK SUPPLIES	3

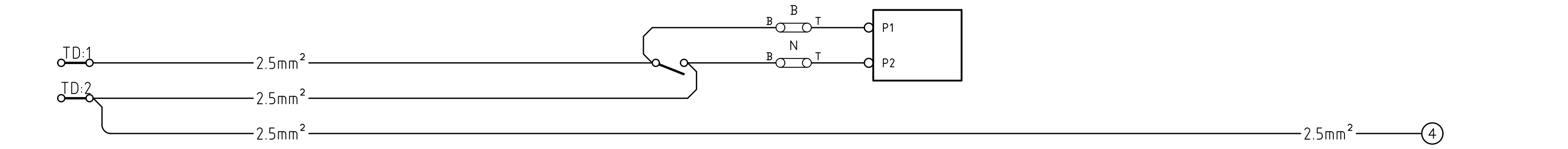
LABEL CONSTRUCTION and DRILLING DETAILS REFER DRAWINGS B1-050996
TYPICAL LABEL ENGRAVING DETAILS REFER DRAWING A0-064825
SEE NOTE 5



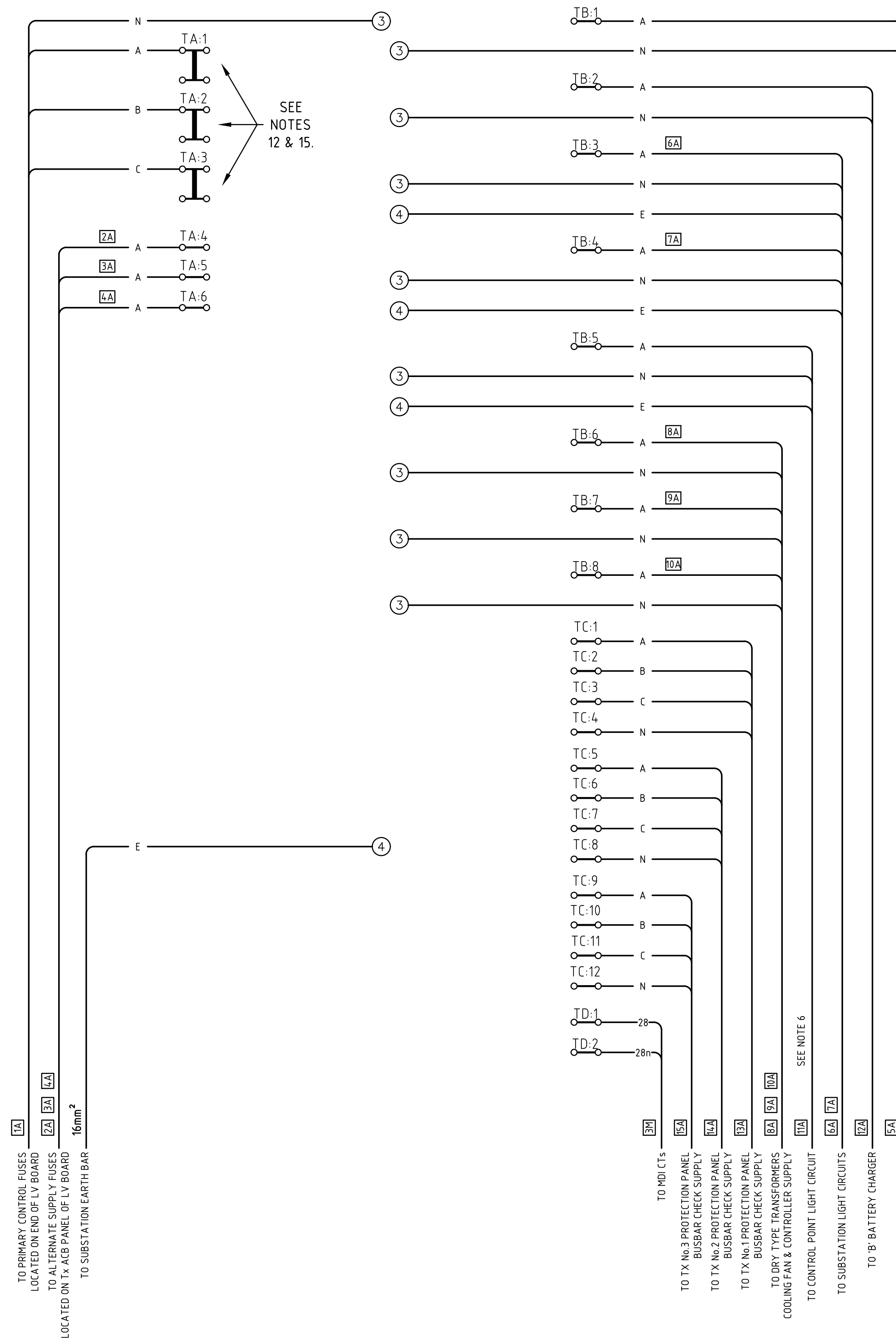
TERMINALS (TA)	4 STEP SWITCH (7)	CABLE SIZE	FUSES/LINKS (14 & 15)	SWITCHBOARD (10)	CABLE SIZE	3+5 PIN SOCKET (9)	DOUBLE GPO (5)	CABLE SIZE	NEUTRAL LINK (3) EARTH LINK (4)	TERMINALS (TB) TERMINALS (TC)
----------------	-------------------	------------	-----------------------	------------------	------------	--------------------	----------------	------------	---------------------------------	-------------------------------



TERMINALS (TD)	CABLE SIZE	MDI SHORTING SWITCH (12)	M6 LINK (11)	M.D.I. UNIT (8)	CABLE SIZE	EARTH LINK (4)
----------------	------------	--------------------------	--------------	-----------------	------------	----------------



WIRING DIAGRAM



CABLE CONNECTIONS

- NOTES:**
- THIS SERVICE BOARD IS DESIGNED FOR SUBURBAN SUBSTATIONS WITH 1500V VA TRANSFORMERS AND WHERE OPTICAL ARC FLASH DETECTION IS INSTALLED.
 - THIS DRAWING IS TO BE READ IN CONJUNCTION WITH RELEVANT NETWORK STANDARDS.
 - ALL DIMENSIONS ARE IN MILLIMETRES. DRILLING DETAILS FOR REFERENCE ONLY. CAM FILE TO BE PRODUCED FROM THIS DRAWING FOR MACHINE MANUFACTURE.
 - THE EARTH AND NEUTRAL LINK CONNECTIONS DESIGNATED BY ⊕ & ⊕ MUST BE INDIVIDUALLY CONNECTED AS SEPARATE CABLES TO THEIR RESPECTIVE LINK.
 - FOR LABELS WITH "M" SUBSTITUTE THE RELEVANT TRANSFORMER NUMBER.
 - CABLE TO BE OF ADEQUATE SIZE TO PREVENT VOLTAGE DROP, REFER TO AS 3000 FOR CABLE SIZE.
 - FOR LABEL CONSTRUCTION AND DRILLING DETAILS REFER TO DRAWINGS B1-050996 & A0-064825 FOR ENGRAVING DETAILS.
 - CABLE NAMES ARE SHOWN THUS TX1 REFER TO DWG 227355SH01 & 02.
 - COMPRESSION TYPE CABLE LUGS ARE TO BE USED FOR TERMINATIONS ONTO ITEMS 10, 11 AND 15.
 - LINKS SHOULD BE MOUNTED SO THAT THE MOVABLE LINK FALLS OPEN WHEN RELEASED.
 - ALL PANEL WIRING TO BE 7/0.67, 0.64V GRADE PVC INSULATED COLOURED GREY UNLESS OTHERWISE SPECIFIED. ALL EARTH WIRING TO BE COLOURED GREEN/YELLOW.
 - STANDARD WARNING LABEL TO HIGHLIGHT THE 415V AC HAZARD TO BE MOUNTED AS SHOWN. ANY EXPOSED TERMINALS ARE TO BE APPROPRIATELY COVERED AND THE HAZARD LABELLED.
 - ALL CIRCUIT BREAKERS TO BE CLEARLY AND APPROPRIATELY LABELLED.
 - MOUNTING PLATE TO BE BAKELITE OR SIMILAR NON-CONDUCTIVE, ELECTRICALLY INSULATED, HEAT RESISTANT MATERIAL 6mm THICK.
 - BRIDGED TERMINALS USING EXPOSED TYPE BAR LINKS ARE TO HAVE END COVER PLATE TYPE INSTALLED BETWEEN A, B & C PHASES TO ENSURE ELECTRICAL ISOLATION. THE TERMINALS ARE TO BE APPROPRIATELY INSULATED AS PER NOTE 12.

ITEM No	DESCRIPTION	REMARKS	No. OFF
15	FUSE BACK CONNECTED	SAFECLIP SC32BW (BLACK)	9
14	LINK BACK CONNECTED 2 STUDS	SAFECLIP SC32PW (WHITE)	3
13	MOUNTING BLOCK	HPM TYPE 141	1
12	10A SINGLE POLE SWITCH	HPM TYPE A770/1	1
11	M6 MOULDED LINK	EUGAQUIP BATTERY TEST LINK (REF DWG 3884.1)	2
CB10	20A 10 10KA MINATURE C/B (TX 3 SUPPLY DRY TYPE ONLY)	CLIPSAL TYPE 4CB120	1
CB9	20A 10 10KA MINATURE C/B (TX 2 SUPPLY DRY TYPE ONLY)	CLIPSAL TYPE 4CB120	1
CB8	20A 10 10KA MINATURE C/B (TX 1 SUPPLY DRY TYPE ONLY)	CLIPSAL TYPE 4CB120	1
CB7	20A 10 10KA MINATURE C/B (POWER ON SWITCH BOARD)	CLIPSAL TYPE 4CB120	1
CB6	16A 10 10KA MINATURE C/B (CONTROL POINT LIGHTS)	CLIPSAL TYPE 4CB116	1
CB5	16A 10 10KA MINATURE C/B (LIGHTS)	CLIPSAL TYPE 4CB116	1
CB4	16A 10 10KA MINATURE C/B (LIGHTS)	CLIPSAL TYPE 4CB116	1
CB3	10A 10 10KA MINATURE C/B ('B' BATTERY CHARGER)	CLIPSAL TYPE 4CB110	1
CB2	10A 10 10KA MINATURE C/B ('A' BATTERY CHARGER)	CLIPSAL TYPE 4CB110	1
CB1	50A 3+ 10KA MINATURE C/B	CLIPSAL TYPE 4CB350	1
10	12 MODULE SWITCHBOARD	CLIPSAL TYPE 4CS12FD	1
9	50A 3 PHASE, 5 PIN SOCKET	CLIPSAL CAT No. 56S0550	1
8	M.D.I. UNIT	LOGISTICS SERVICES STOCK CODE 169946	1
7B	TERMINAL COVERS	KRAUS & NAIMER TYPE S1 M160/B03	1
7A	ADJUSTABLE SHAFT	KRAUS & NAIMER TYPE S1 M004E/0008070	1
7	4 STEP CHANGEOVER SWITCH	KRAUS & NAIMER TYPE C32 A231 603 E	1
6	MOUNTING BLOCK	HPM TYPE 140	1
5	10A DOUBLE GPO	HPM TYPE 777	1
4	EARTH LINK	CLIPSAL TYPE L18	1
3	NEUTRAL LINK	CLIPSAL TYPE L18	1
TA	TERMINAL STRIP 1 (TA1-6) SEE NOTES 12 & 15.	WEDMULLER SAK 35/EN - RAIL MOUNTED TERM.	9
TB	TERMINAL STRIP 2 (TB1-8)	WEDMULLER SAK 25/EN - RAIL MOUNTED TERM.	8
TC	TERMINAL STRIP 3 (TC1-12)	WEDMULLER SAK 2.5/EN - RAIL MOUNTED TERM.	12
TD	TERMINAL STRIP 4 (TD1-2)	UTLUX H3820 - RAIL MOUNTED TERMINAL	2
2	TERMINAL MOUNTING RAIL	UTLUX H2233A - 1 METRE MOUNTING RAIL	1
1	WALL MOUNTED ENCLOSURE	B&R NID6063	1

MATERIAL LIST (SEE NOTE 2)

CAM DRAWING
DRAWN BY: N.RAMAN
CHECKED BY: L.MARTINUZZI
APPROVED BY: M.BENNETT

REVISIONS

NO.	DESCRIPTION	DATE
1	ISSUED FOR MANUFACTURE	28/06/2012

NOTE: TO CLARIFY MATERIAL TO BE USED FOR MOUNTING PLATE DRAWINGS ADDED TO THIS DRAWING. DATE: 20/02/2014. DRAWN BY: L.MARTINUZZI. CHECKED BY: M.BENNETT. APPROVED BY: M.BENNETT.



Ausgrid
NETWORK STANDARD
570 George Street
SYDNEY NSW 2000
P: 9272 3805

SCALE	AS SHOWN
DESIGNED	-
DRAWN	N.RAMAN
CHECKED	L.MARTINUZZI
APPROVED	M.BENNETT
DATE	28/06/2012
TRIM REF	-
ISSUED FOR	PROJECT NUMBER

RMCB SUBSTATIONS WITH E TYPE LV BOARD
SUBURBAN TYPE SUBSTATION WITH 1500KVA TRANSFORMERS SERVICE BOARD
GENERAL ARRANGEMENT AND WIRING DIAGRAM

ISSUED FOR: SM 6717-1-2
DRAWING No: 227356
SHEET 1
AMD 4
SIZE A0