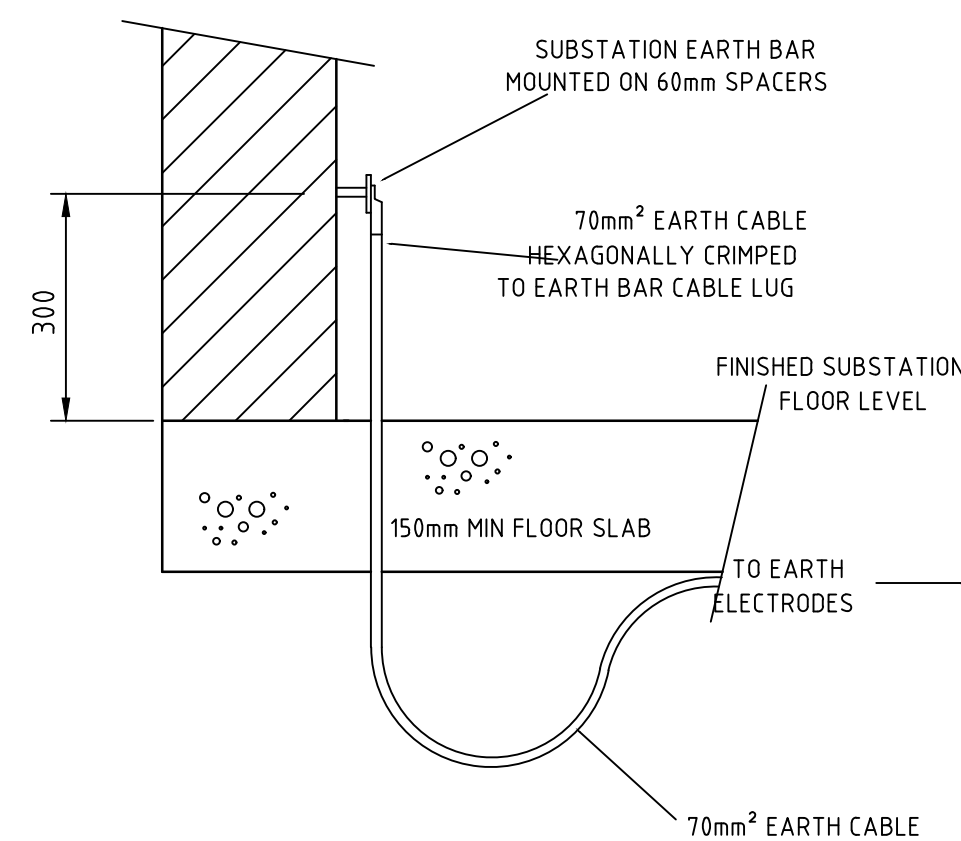


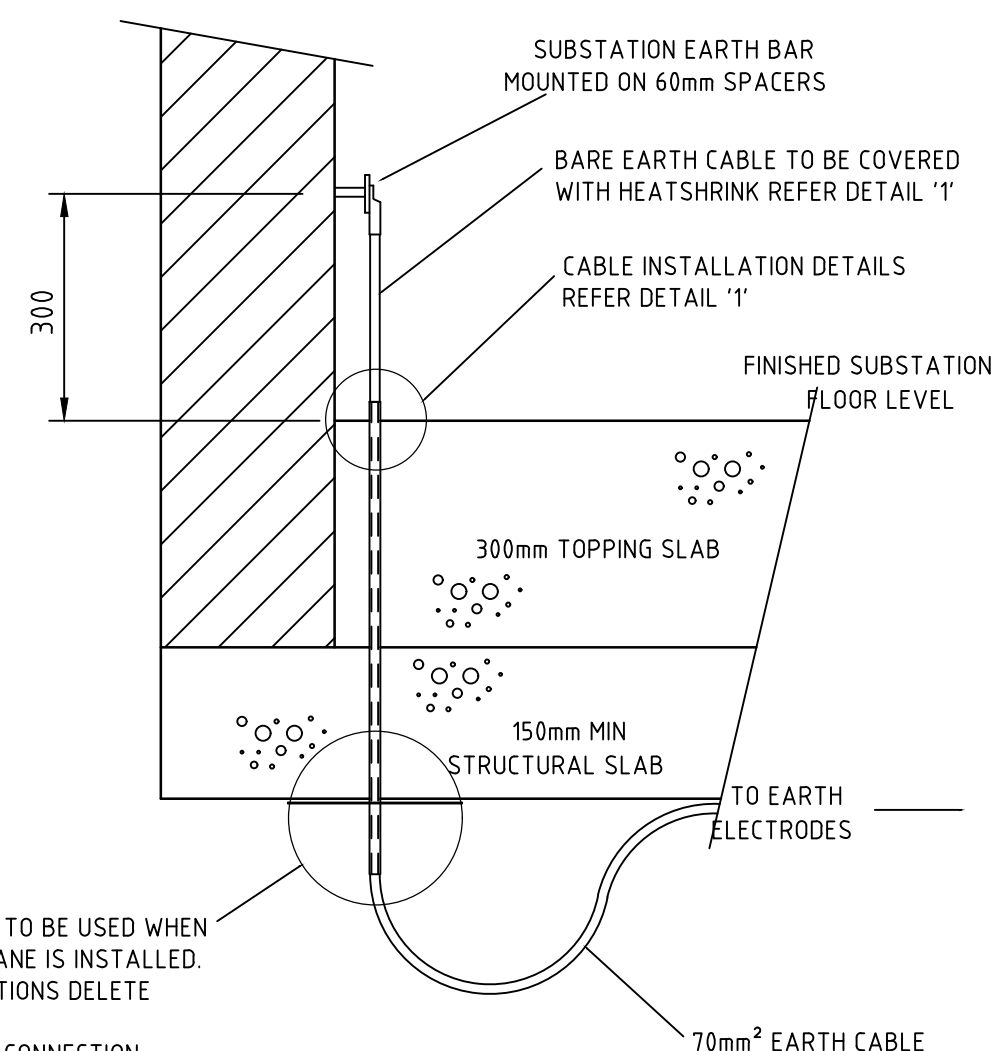
TYPE A INSTALLATION

SCALE 1:10



TYPE B INSTALLATION

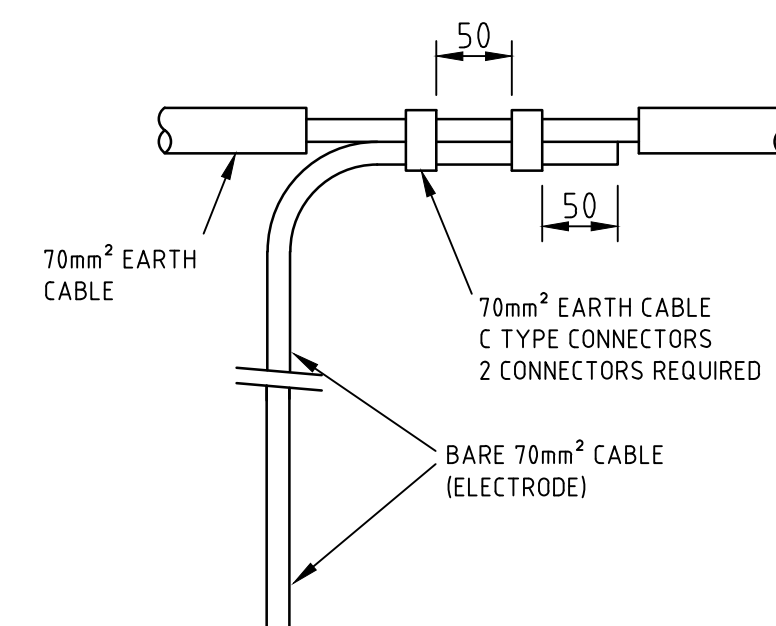
SCALE 1:10



TYPE 'A' INSTALLATION TO BE USED WHEN A WATERPROOF MEMBRANE IS INSTALLED FOR TYPE 'B' INSTALLATIONS DELETE WATER BARRIER PLATE.
FOR INSTALLATION AND CONNECTION DETAILS REFER DETAIL '1'

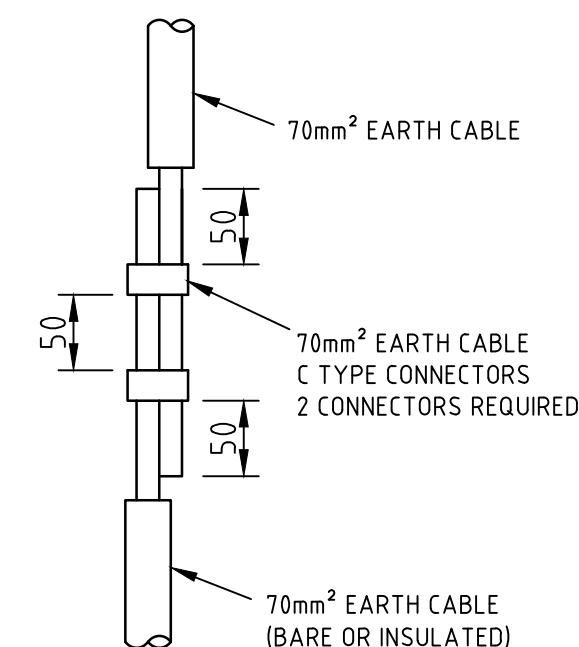
TYPES A & B INSTALLATIONS
CONSTRUCTED WITH TOPPING SLAB

SCALE 1:10



CONNECTIONS FOR BORE HOLE
CABLE TYPE ELECTRODE

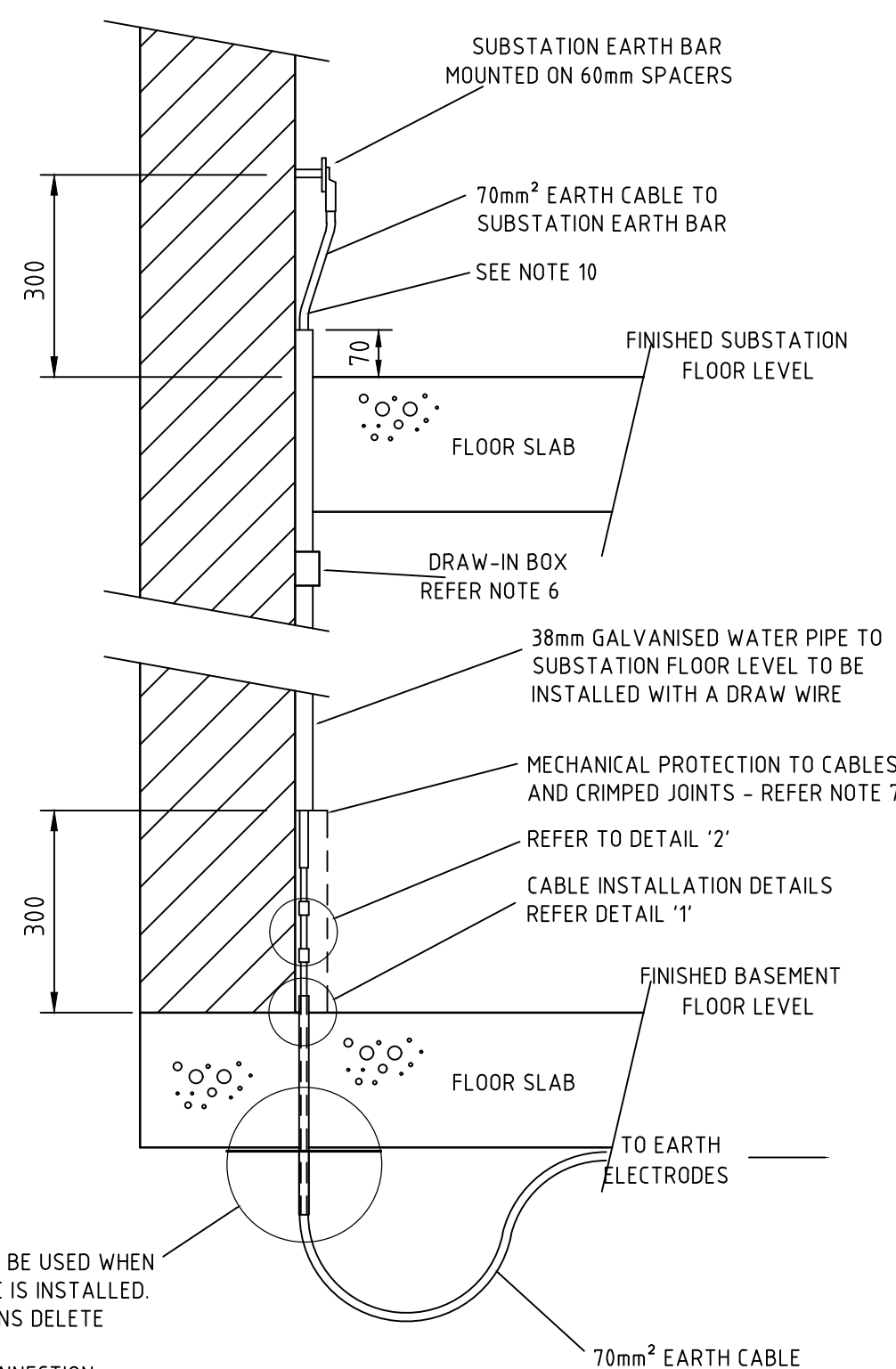
SCALE 1:5



DETAIL 2

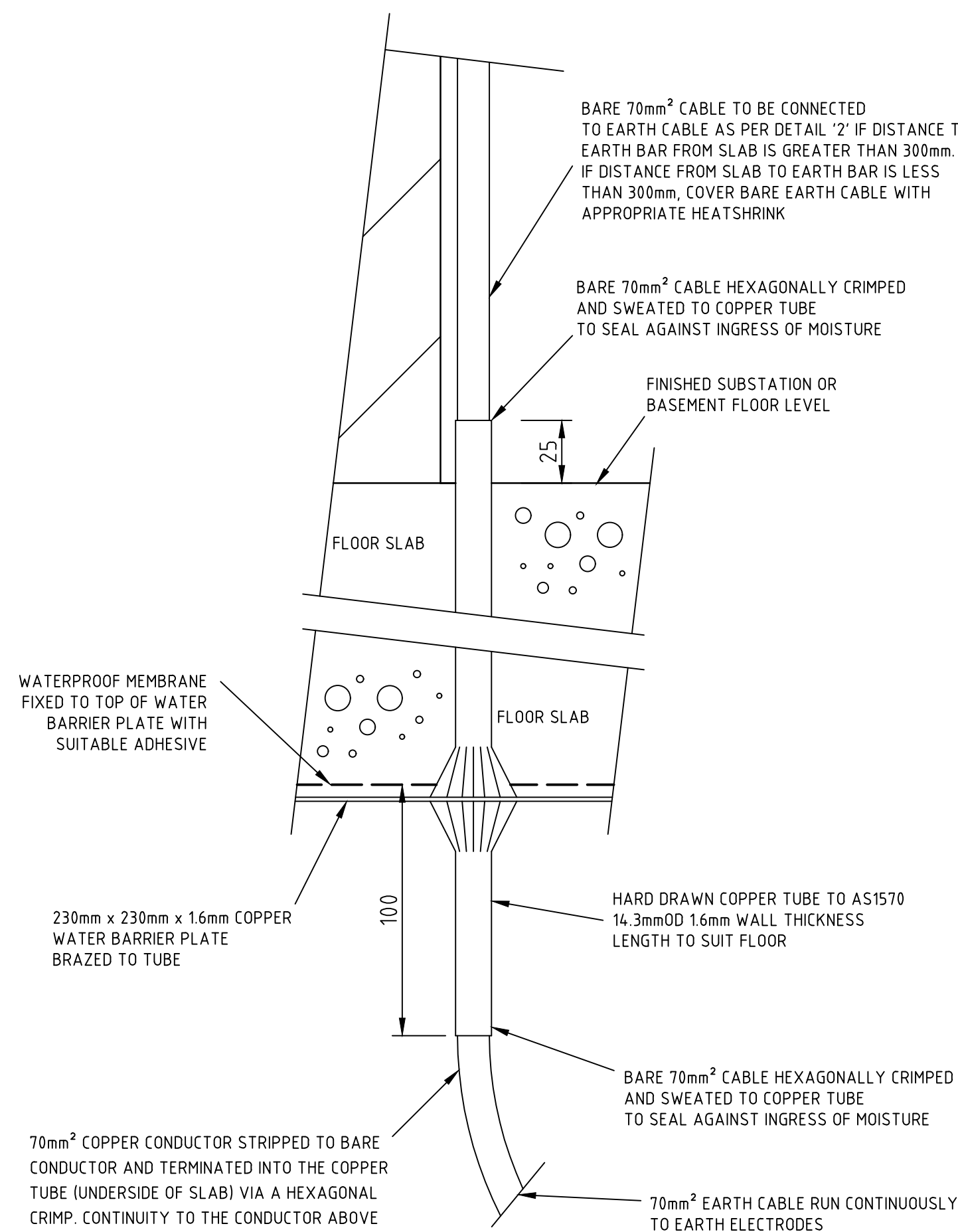
CONNECTING EARTH CABLES

SCALE 1:5



TYPES A & B INSTALLATIONS
WITH EARTH RODS IN THE LOWEST BASEMENT LEVEL

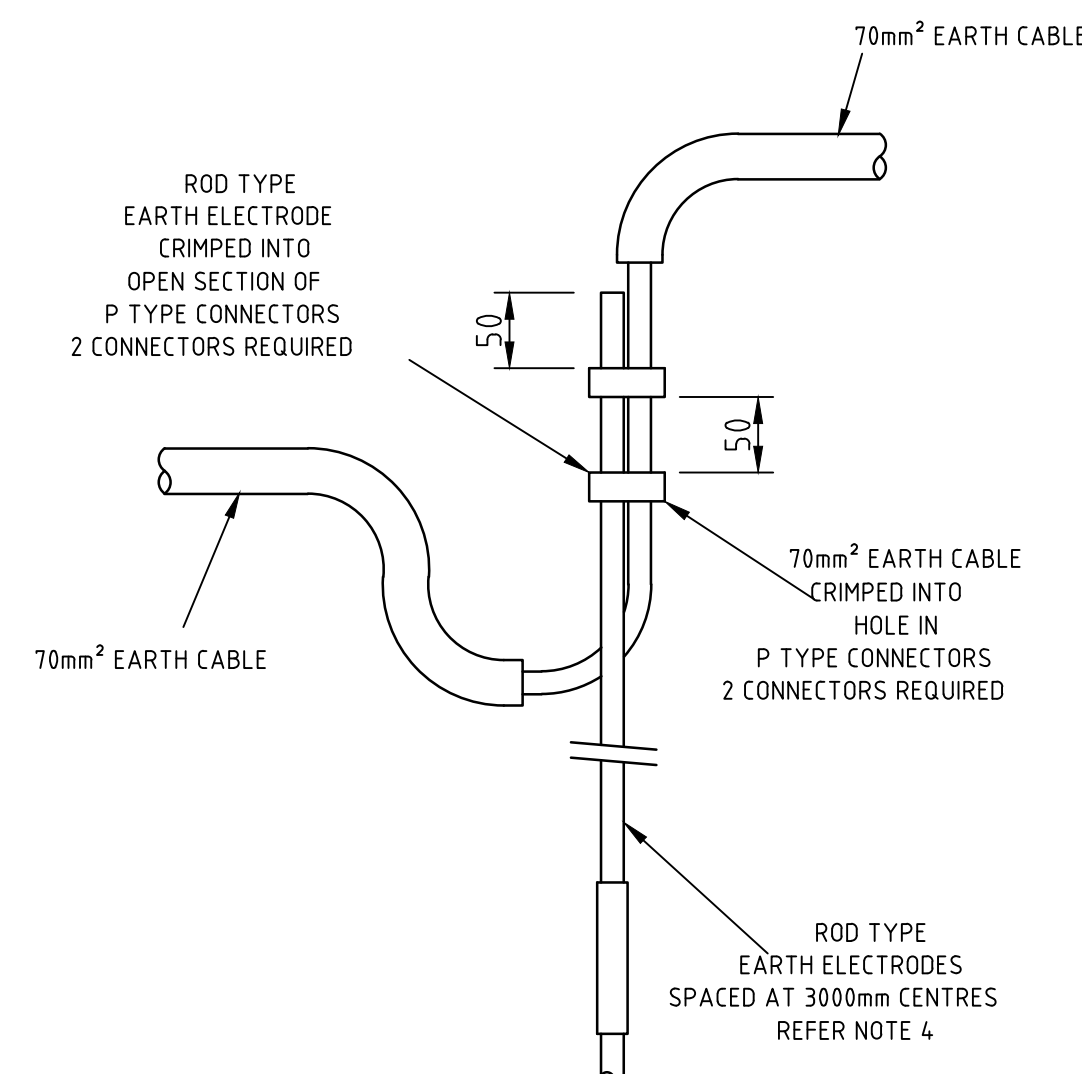
SCALE 1:10



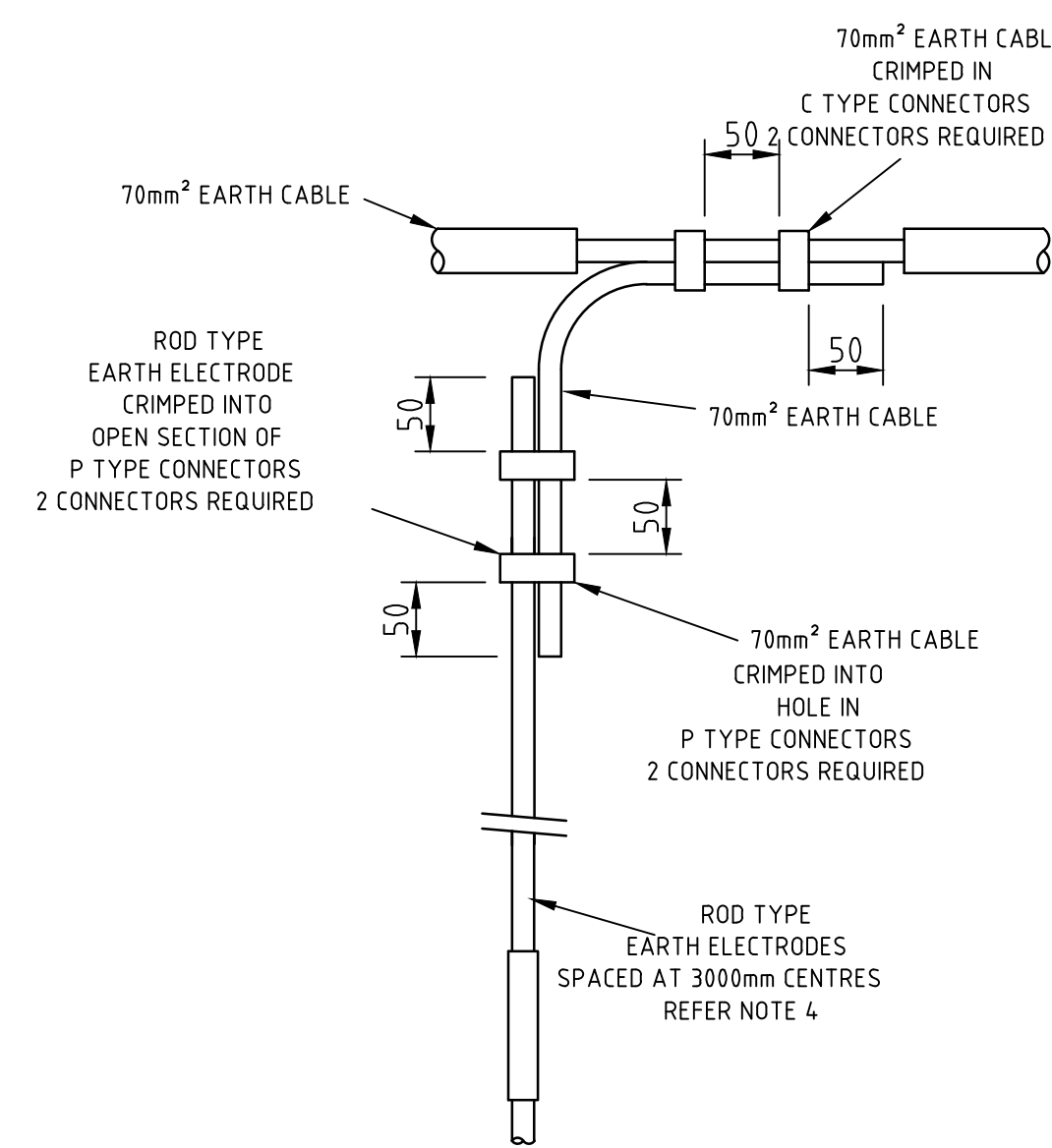
DETAIL 1

WATER BARRIER PLATE INSTALLATION

SCALE 1:2



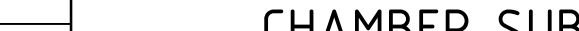
PREFERRED



ALTERNATIVE

CONNECTIONS FOR DRIVEN ROD TYPE EARTH ELECTRODES

SCALE 1:5

<div>CAD DRAWING</div> <div>DO NOT MANUALLY AMEND</div> <div>A M E N D M E N T S</div>										<div>12. SHOW VARIOUS TYPES OF INSTALLATIONS.</div> <div>P.JARVIS CHECKED: 11/12/1990 APPROVED: DTC DGH</div>										<div>13. REF E2, C10. DRAW-IN BOX AND NOTES 6 AND 7 ADDED.</div> <div>P.JARVIS CHECKED: 01/11/1991 APPROVED: BJT DGH</div>										<div>14. EARTH ROD SPACING AND NOTES ALTERED TO NETWORK STANDARDS.</div> <div>P.JARVIS CHECKED: 02/05/2001 APPROVED: M.PEACOCK M.PEACOCK PN: 99/1007/7/5</div>										<div>15. NOTES 1 AND 4, ALTERED TITLE CHANGED FROM SUBSTATION EARTHING TYPICAL INSTALLATION OF EARTH ELECTRODES.</div> <div>MP CHECKED: 18/01/2005 APPROVED: IWR PWJ PN: ES103/59/1/2</div>										<div>16. DETAILS & REFERENCES TO TUBE TYPE COMPRESSION FITTINGS REPLACED BY C AND P TYPE COMPRESSION FITTINGS, NOTE 4, UPDATED.</div> <div>PWJ CHECKED: 04/09/2006 APPROVED: IWR PN: ES103/59/1/2</div>										<div>17. NEW DRAWING BORDER ADDED. TUBE TYPE EARTH ELECTRODES REMOVED. ROD TYPE ELECTRODES DETAIL AMENDED.</div> <div>C.WABBUTT CHECKED: 10/01/2012 APPROVED: P.JARVIS PN: PM02-02010-1-4-1</div>										<div>18. DETAIL FOR BORE HOLE EARTHING ADDED. DETAIL '2' ADDED. DETAIL '1', TYPE 'A' & TYPE 'B' AMENDED TO SHOW NEW 'CABLE' TO COPPER TUBING. NOTES 1, 4, 6 & 8 AMENDED NOTE 9 & 10 ADDED</div> <div>C.WABBUTT CHECKED: 14/03/2012 APPROVED: P.JARVIS PN: PM02-02010-1-4-1</div>										<div>19. NOTE 1 AND EARTHING DESIGN NOTE ALTERED TO REFLECT CRITERIA FOR STANDARD MINIMUM EARTHING DESIGN</div> <div>P.JARVIS CHECKED: 24/04/2016 APPROVED: B.STADDON/M.CHARAN PN: DURGEE OPEX 6588-1-1-6</div>										<div>20. NOTE AMENDED ON DETAIL 1.</div> <div>P.BROS CHECKED: 04/11/2021 APPROVED: C.WABBUTT P.TURRIN</div>										<div>21. EARTHBAR SPACER CHANGED FROM 40mm TO 60mm.</div> <div>P.BROS CHECKED: 11/01/2024 APPROVED: P.TURRIN G.FORD</div>										<div>22. BORDER & TITLE BLOCK UPDATED.</div> <div>M.BENNETT CHECKED: 09/09/2024 APPROVED: L.HARTNUNZI M.BENNETT</div>										<div><div><div></div><div>24-28 Campbell Street SYDNEY NSW 2000</div></div><table><tr><td>SCALE</td><td>AS SHOWN</td></tr><tr><td>DESIGNED</td><td>-</td></tr><tr><td>DRAWN</td><td>J.BROOKER</td></tr><tr><td>CHECKED</td><td>IGH</td></tr><tr><td>APPROVED</td><td>JP</td></tr><tr><td>DATE</td><td>30/11/1961</td></tr><tr><td>TRIM REF</td><td>-</td></tr></table></div>										SCALE	AS SHOWN	DESIGNED	-	DRAWN	J.BROOKER	CHECKED	IGH	APPROVED	JP	DATE	30/11/1961	TRIM REF	-	<div>ISSUED FOR CONSTRUCTION</div>										<div>PROJECT NUMBER 18745</div>										<div>DRAWING No 25121</div>										<div>SHEET 1</div>										<div>AMD 22</div>										<div>SIZE A1</div>									
SCALE	AS SHOWN																																																																																																																																																																																																										
DESIGNED	-																																																																																																																																																																																																										
DRAWN	J.BROOKER																																																																																																																																																																																																										
CHECKED	IGH																																																																																																																																																																																																										
APPROVED	JP																																																																																																																																																																																																										
DATE	30/11/1961																																																																																																																																																																																																										
TRIM REF	-																																																																																																																																																																																																										