

SEE NOTE 3

ITEM	MAKE	TYPE	RATING	QUANTITY
PANEL LINKS AND FUSES				
FUSE HOLDER	ALSTOM	SAFECLIP SC20H BLACK	-	5
TEST LINK	PHOENIX	URTK/S	-	10
MARKER	PHOENIX	ZB 8, LGS 1 - 10	-	1
MARKER	PHOENIX	ZB 8, LGS 11 - 20	-	1
END PLATE	PHOENIX	D-URTK	-	2
END CLAMP	PHOENIX	E/NS 35N	-	8
DIN RAIL	-	STANDARD DIN RAIL	-	360mm
COVER HOLDER + NUT	PHOENIX	AP3-TNS35	-	2
COVER PROFILE	PHOENIX	AP3	-	330mm
FUSE	-	HRC FUSE LINK	4A	3
LINK	-	LINK TO SUIT FUSE HOLDER	-	1
FUSE	-	HRC FUSE LINK	2A	2
CT & VT INCOMING TERMINATIONS - X1				
TERMINAL	UTILUX	H3820	-	10
END PLATE	UTILUX	H3821	-	2
END CLAMP	UTILUX	H2232	-	2
MOUNTING RAIL	UTILUX	H2233	-	210mm
TERMINAL COVER	UTILUX	H3822	-	158mm
BRIDGING LINK	UTILUX	H3824P	-	2

EQUIPMENT & ASSOCIATED EQUIPMENT PARTS LIST

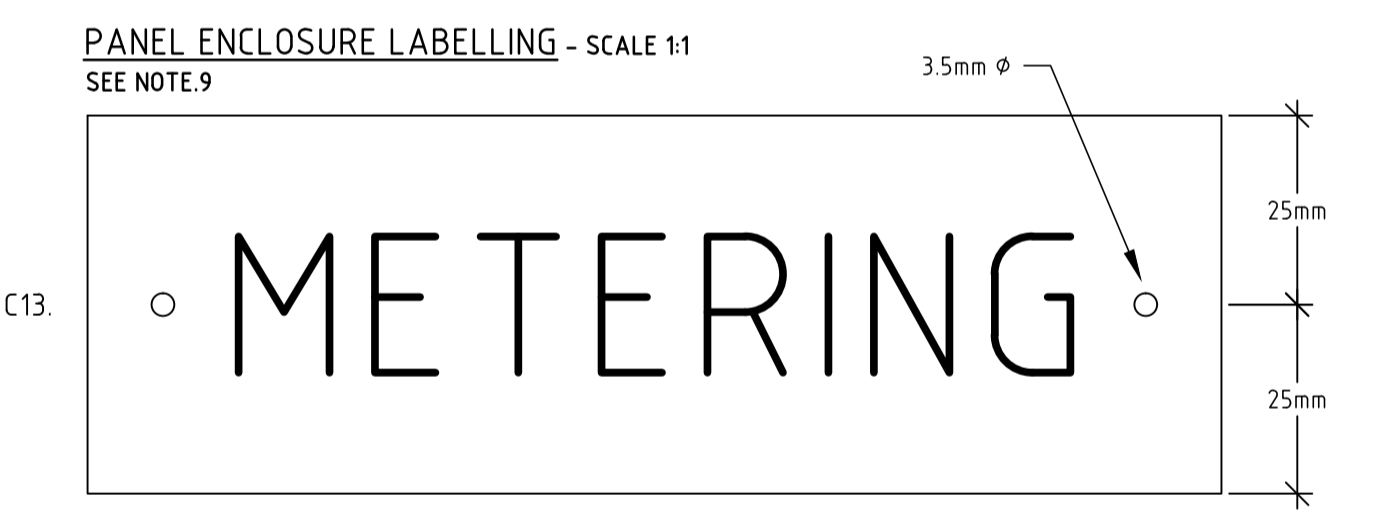
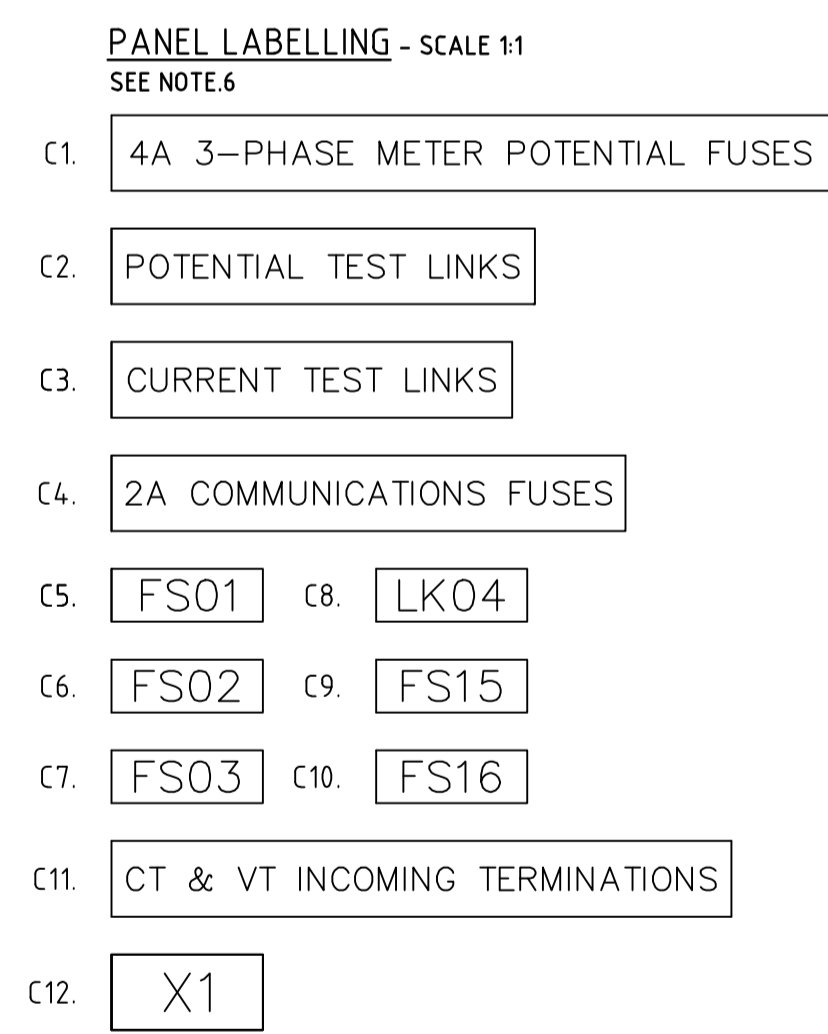
SEE NOTE 2

ITEM	RATING	ITEM FUNCTION	MAKE	TYPE
FS01	4A	METER 110V VT POTENTIAL FUSE - RED ϕ	ALSTOM	SAFECLIP SC20H BLACK
FS02	4A	METER 110V VT POTENTIAL FUSE - WHITE ϕ	ALSTOM	SAFECLIP SC20H BLACK
FS03	4A	METER 110V VT POTENTIAL FUSE - BLUE ϕ	ALSTOM	SAFECLIP SC20H BLACK
LK04	LINK	METER 110V VT POTENTIAL LINK - NEUTRAL	ALSTOM	SAFECLIP SC20HWH WHITE
LK05	-	METER POTENTIAL TEST LINK - RED ϕ	PHOENIX	URTK/S
LK06	-	METER POTENTIAL TEST LINK - WHITE ϕ	PHOENIX	URTK/S
LK07	-	METER POTENTIAL TEST LINK - BLUE ϕ	PHOENIX	URTK/S
LK08	-	METER POTENTIAL TEST LINK - NEUTRAL	PHOENIX	URTK/S
LK09	-	METER CURRENT TEST LINK - RED ϕ NON POLARITY	PHOENIX	URTK/S
LK10	-	METER CURRENT TEST LINK - RED ϕ NON POLARITY	PHOENIX	URTK/S
LK11	-	METER CURRENT TEST LINK - WHITE ϕ POLARITY	PHOENIX	URTK/S
LK12	-	METER CURRENT TEST LINK - WHITE ϕ NON POLARITY	PHOENIX	URTK/S
LK13	-	METER CURRENT TEST LINK - BLUE ϕ POLARITY	PHOENIX	URTK/S
LK14	-	METER CURRENT TEST LINK - BLUE ϕ NON POLARITY	PHOENIX	URTK/S
FS15	2A	COMMUNICATIONS 110V POTENTIAL FUSE	ALSTOM	SAFECLIP SC20H BLACK
FS16	2A	COMMUNICATIONS 110V POTENTIAL FUSE	ALSTOM	SAFECLIP SC20H BLACK
X1	-	REAR OF PANEL INCOMING CT AND VT TERMINATIONS	UTILUX	H3820

AC FUSE/TEST LINK/TERMINATIONS FUNCTION TABLE

NOTES:

- ALL PANELS, CABLING, AND EQUIPMENT SHALL BE INSTALLED IN ACCORDANCE WITH THE HIGH VOLTAGE METERING REQUIREMENTS SETOUT IN ES3.
- THE AC FUSE/TEST LINK/TERMINATIONS FUNCTION TABLE OR EQUIVALENT IS TO BE PRINTED OUT, LAMINATED AND APPROPRIATELY ATTACHED TO THE REAR OF THE PANELS ENCLOSURE ACCESS DOOR OR LID, OR ON THE PANEL ITSELF IF AN ENCLOSURE IS NOT USED.
- PART NUMBERS QUOTED IN THIS DOCUMENT REFER TO COMMONLY USED EQUIPMENT AND SHOULD BE USED AS A GUIDE. ALL PARTS CAN BE OF THE SAME TYPE OR EQUIVALENT.
- DIN MOUNTED EQUIPMENT COVER - ALL LINKS AND FUSES AT THIS TEST POINT MUST HAVE A SEALABLE COVER THAT WHEN IN POSITION NO CONDUCTOR IS EXPOSED AND HAS THE FACILITY TO BE APPROPRIATELY SEALED BY THE APPROVED METER PROVIDER. WHEN THE METERING IS INSTALLED OUTSIDE IN ENVIRONMENTS WITH HIGH LEVELS OF AIR BOURNE PARTICLES SUCH AS; COAL DUST ETC., THE PANEL ENCLOSURE SHALL BE RATED TO A MINIMUM OF IP55 TO PREVENT THE INGRESS OF SUCH MATTER.
- THE INCOMING CT AND VT TERMINATIONS X1, MUST HAVE A COVER THAT PREVENTS CONTACT WITH LIVE EXPOSED CONDUCTORS AND HAS THE FACILITY TO BE APPROPRIATELY SEALED BY THE APPROVED METER PROVIDER.
- ALL LABELS C.1 - C.12 TO BE ENGRAVED TYPE ON WHITE GRAVOPLY OR EQUIVALENT WITH BLACK LETTERING AND SHALL BE ADEQUATELY SECURED TO THE PANEL.
- THE FUSE/LINK BASE AND HOLDER LABELS C.5 - C.10, SHALL HAVE A LABEL ON BOTH THE BASE AND FUSE HOLDER.
- TEST LINKS 05 - 14 SHALL HAVE PUSH IN TERMINAL MARKINGS (OR EQUIVALENT) TO IDENTIFY THE LINK NUMBER.
- IF LABEL C13 IS TO BE INSTALLED OUTDOORS, IT SHALL BE MADE FROM UV RATED MATERIAL. IF AN ENCLOSURE IS USED IT SHALL BE FIXED TO THE ENCLOSURE LID WITH BOLTS AND SELF LOCKING NUTS. CARE SHOULD BE TAKEN TO ENSURE THE IP RATING OF THE ENCLOSURE IS MAINTAINED. IF THE METERING PANEL IS INSTALLED INDOORS AND AN ENCLOSURE IS NOT USED, THE LABEL SHALL BE FIXED TO THE FRONT OF THE PANEL.
- THE BRIDGING LINKS ARE ONLY REQUIRED IF A 4 WIRE SYSTEM IS USED FOR THE INCOMING CURRENT CIRCUIT.
- ALL METAL COMPONENTS INCLUDING ALL EQUIPMENT DIN RAIL SHALL BE BONDED TO EARTH.



SEE NOTE 6

LABEL	SIZE	TYPE	TEXT LINE	TEXT HEIGHT	ENGRAVING	QTY
C1	95mm X 10mm	ENGRAVED TYPE - WHITE/BLACK	LINE 1	3.0mm	4A 3-PHASE METER POTENTIAL FUSES	1
C2	56mm X 10mm	ENGRAVED TYPE - WHITE/BLACK	LINE 1	3.0mm	POTENTIAL TEST LINKS	1
C3	53mm X 10mm	ENGRAVED TYPE - WHITE/BLACK	LINE 1	3.0mm	CURRENT TEST LINKS	1
C4	68mm X 10mm	ENGRAVED TYPE - WHITE/BLACK	LINE 1	3.0mm	2A COMMUNICATIONS FUSES	1
C5	20mm X 7mm	ENGRAVED TYPE - WHITE/BLACK	LINE 1	4.0mm	FS01	2
C6	20mm X 7mm	ENGRAVED TYPE - WHITE/BLACK	LINE 1	4.0mm	FS02	2
C7	20mm X 7mm	ENGRAVED TYPE - WHITE/BLACK	LINE 1	4.0mm	FS03	2
C8	20mm X 7mm	ENGRAVED TYPE - WHITE/BLACK	LINE 1	4.0mm	LK04	2
C9	20mm X 7mm	ENGRAVED TYPE - WHITE/BLACK	LINE 1	4.0mm	FS15	2
C10	20mm X 7mm	ENGRAVED TYPE - WHITE/BLACK	LINE 1	4.0mm	FS16	2
C11	82mm X 10mm	ENGRAVED TYPE - WHITE/BLACK	LINE 1	3.0mm	CT & VT INCOMING TERMINATIONS	1
C12	20mm X 10mm	ENGRAVED TYPE - WHITE/BLACK	LINE 1	7.0mm	X1	1
C13	150mm X 50mm	ENGRAVED TYPE - WHITE/BLACK	LINE 1	20mm	METERING	1

LABEL SCHEDULE

CAD DRAWING DO NOT MANUALLY RE-EDIT AMENDMENTS 1. UPDATED EQUIPMENT & ASSOCIATED EQUIPMENT PARTS LIST. 25/06/2015 M.HARRISON CHECKED M.HARRISON APPROVED	HIGH VOLTAGE METERING SCHEMATIC DIAGRAM, WIRING DIAGRAM & PANEL LAYOUT 221331 sh.1		BSP METERING 824 OLD ILLAWARRA RD, MENAI 2234 PHONE: (02) 85696710	SCALE: NTS DESIGNED: R.LOWE DRAWN: M.HARRISON CHECKED: A.BRADSHAW APPROVED: R.LOWE DATE: 11/11/2013 PRJTRK No: - PROJECT NUMBER: -	HIGH VOLTAGE METERING LABELLING & EQUIPMENT DETAILS INSTALLATION WITHOUT INSTRUMENT TRANSFORMER MARSHALLING BOX/S		
	ASSOCIATED DRAWINGS			DRAWING No: 221331 SHEET: 2 AMD: 01 SIZE: A1			