

# Concord Substation Upgrade



## Project update

As you may know, Ausgrid is carrying out work to upgrade the existing Concord substation on George Street, Concord West.

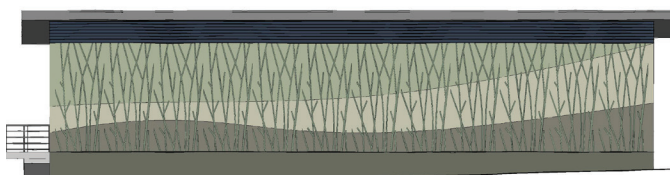
In April, Ausgrid invited businesses and residents, directly adjacent to the substation, to provide feedback on two exterior concept designs for the proposed building. These building designs were prepared by architectural specialists, Kann Finch.

Ausgrid thanks all those who have provided feedback on the proposal over the last few months. Your interest and input has been a valuable part of the planning process.

A summary of the engagement with the community and feedback received can be found on the project page at [ausgrid.com.au/concord\\_substation\\_upgrade](https://ausgrid.com.au/concord_substation_upgrade).

## Preferred building design

Image 1. Southern Elevation



Based on the community's feedback, design Scheme 2 was the most popular. The concept drawing presented to the community is shown in images 1 and 2.

In considering the visual impact to the surrounding community, the building has been designed to reflect the local area.

The proposed exterior materials are precast concrete panels, coated with a high bonding strength paint. The

neutral pastel colours complement the residential and commercial neighbourhood.

This finish will provide superior weather proofing protection to the building. The roof will be clad with high grade Colorbond roof sheeting.

Image 2. View from eastern end of Ausgrid's driveway



## Community consultation

Since presenting concept designs, Ausgrid has continued the planning of the project. An environmental assessment has been prepared that includes the community's preferred exterior design.

As part of the environmental assessment and the process to develop the project, Ausgrid has considered a range of factors including electrical requirements, environmental and heritage, community and traffic impacts, constructability and cost.

Ausgrid now invites you to review the proposal's environmental assessment (known as a Review of Environmental Factors or REF). The REF is available at [ausgrid.com.au/concord\\_substation\\_upgrade](https://ausgrid.com.au/concord_substation_upgrade). Feedback is invited until 6 July 2020.

## Key dates

### March - April 2020

- Concept planning and obtaining community and stakeholder feedback

### April - May 2020

- Review of Environmental Factors preparation and display

### Mid 2020 to early 2021

- Completion of design, project approved for construction and contractor appointed

### Early 2021 to late 2021

- Target construction start of the substation upgrade

### Late 2021 to mid 2022

- Equipping of new switchroom

### Mid 2022 to late 2023

- Minor civil and electrical works to make connections between new switchroom and surrounding network, including decommissioning of existing switchgear

## Review of Environmental Factors process and display

Ausgrid is the determining authority of these works under the *NSW Environmental Planning and Assessment Act, 1979*. As part of the approvals process, an environmental assessment has been prepared.

The REF investigates the potential environmental impacts associated with the construction, operation and maintenance of the proposed substation development.

## Next steps

After considering feedback on the environmental assessment, Ausgrid will then finalise plans and commence discussions with contractors to construct the proposal.

Subject to finalisation of the REF and project construction approval, Ausgrid plans to start construction work in early 2021.

## Contacting us

You are welcome to contact us with any enquiries:

- Call** 1800 604 765 (free call from fixed phones)  
**Email** [majorprojects@ausgrid.com.au](mailto:majorprojects@ausgrid.com.au)  
**Visit** [ausgrid.com.au/concord\\_substation\\_upgrade](http://ausgrid.com.au/concord_substation_upgrade)



**Interpreter service 131 450**

## Transformer Assessment and Replacement

Ausgrid has undertaken an assessment of the existing transformers. Based on this assessment Ausgrid has determined the transformer closest to George Street requires replacement.

The transformer will need to be replaced towards the end of 2020, prior to commencing work on the new switchroom building. This will ensure that a reliable electricity supply is maintained to the area.

The existing transformer will be replaced with a modern equivalent, similar to the transformer recently replaced closest to the railway line. Ausgrid completed this replacement in late 2019.

## Keeping you informed

The latest project information will also be available at [ausgrid.com.au/concord\\_substation\\_upgrade](http://ausgrid.com.au/concord_substation_upgrade).

Should you have any questions in relation to the substation upgrade, please contact us at [majorprojects@ausgrid.com.au](mailto:majorprojects@ausgrid.com.au) or alternatively phone at **1800 604 765**.

## Your questions

The following are some of the most commonly asked questions from the consultation.

### Why does the substation need to be upgraded?

The substation's 11,000 volt switchgear and associated equipment is aged and is ready to be retired. The switchgear needs to be replaced to enable Ausgrid to maintain a safe and reliable power supply to your area.

### Will this affect the electricity supply in my home?

It is not anticipated that upgrades to the substation will have any direct impact on your electricity supply. In the unlikely event that we will need to temporarily interrupt your electricity supply during construction, you will be notified in advance.

### What is the proposed new building height?

Ausgrid anticipates that it will be less than 7 metres from existing ground level. However, this will be finalised during the detailed design stage, which you will be kept informed of.

Please refer to our Frequently Asked Questions document at [ausgrid.com.au/concord\\_substation\\_upgrade](http://ausgrid.com.au/concord_substation_upgrade) for more.