



Kiosk Substation Labelling Guide



Issue Date – v. Sept 2016

This document has been produced as a guide and is for reference purposes ONLY. All kiosk substation labelling must comply with NS117 & NS158

Kiosk Substation Numbers



The distribution centre class identifier, e.g. PT, S, HP or HS must precede the distribution centre number, and the letters CP precede a control point number

Kiosk substation numbers shall be 50 mm high black letters/numerals embossed on class 2 reflective yellow background. The characters shall be riveted to the roadway side of the kiosk housing.

Schneider RMI RM6 Labelling

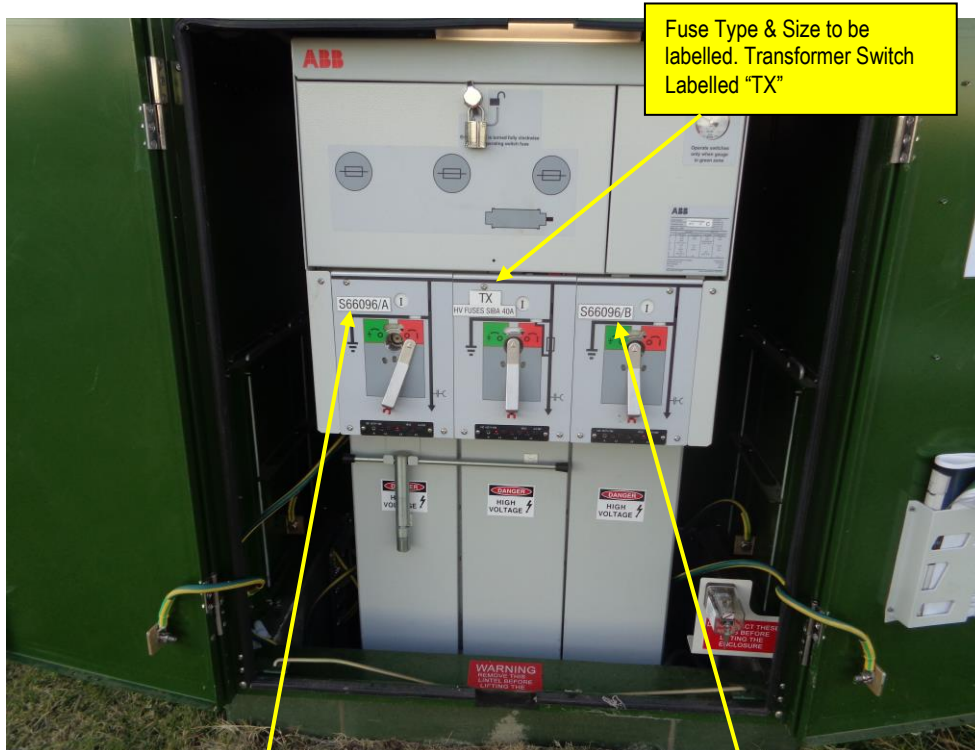


RMI's: All switches shall be labelled using laminated adhesive backed tape on white PVC sheet of minimum thickness 1.5 mm and nominal size 100 mm x 50 mm, or other size suitable for the equipment. Minimum letter height is 20 mm.

Feeder switches will be labelled with the substation number, followed by a slash and a letter A, B, C, D etc. The letter identifying the feeder switch will be displayed on system diagrams.

At single RMI installations, the feeder switches will be labelled A and B. The tee-off circuit will be labelled 'Transformer' or 'Tx'. Eg, S.12345 / A

ABB SAFELINK Labelling

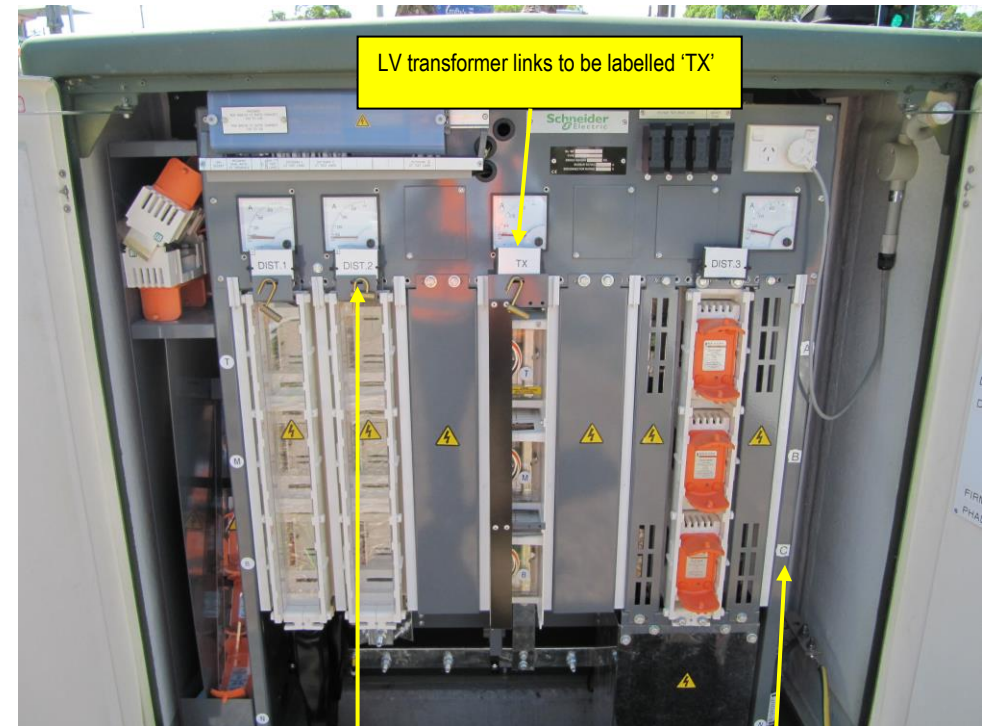


RMI's: All switches shall be labelled using laminated adhesive backed tape on white PVC sheet of minimum thickness 1.5 mm and nominal size 100 mm x 50 mm, or other size suitable for the equipment. Minimum letter height is 20 mm. These will need to be sourced and installed to this type of RMI utilizing suitable double sided tape.

Feeder switches will be labelled with the substation number, followed by a slash and a letter A, B, C, D etc. The letter identifying the feeder switch will be displayed on system diagrams.

At single RMI installations, the feeder switches will be labelled A and B. The tee-off circuit will be labelled 'Transformer' or 'Tx'. Eg, S.12345 / A

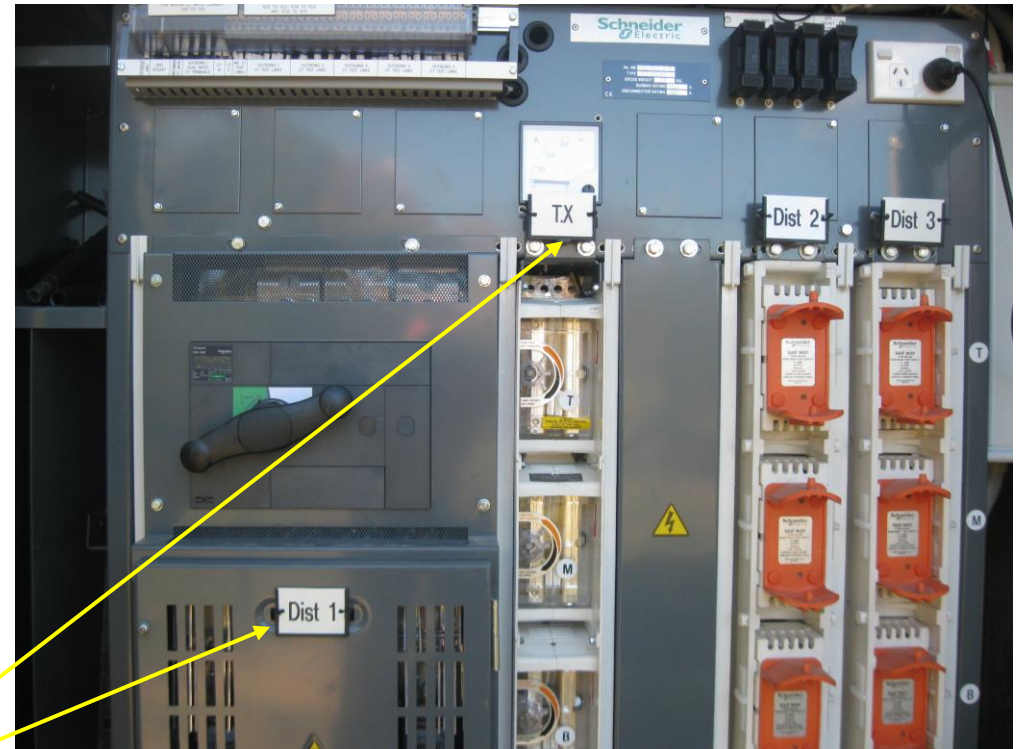
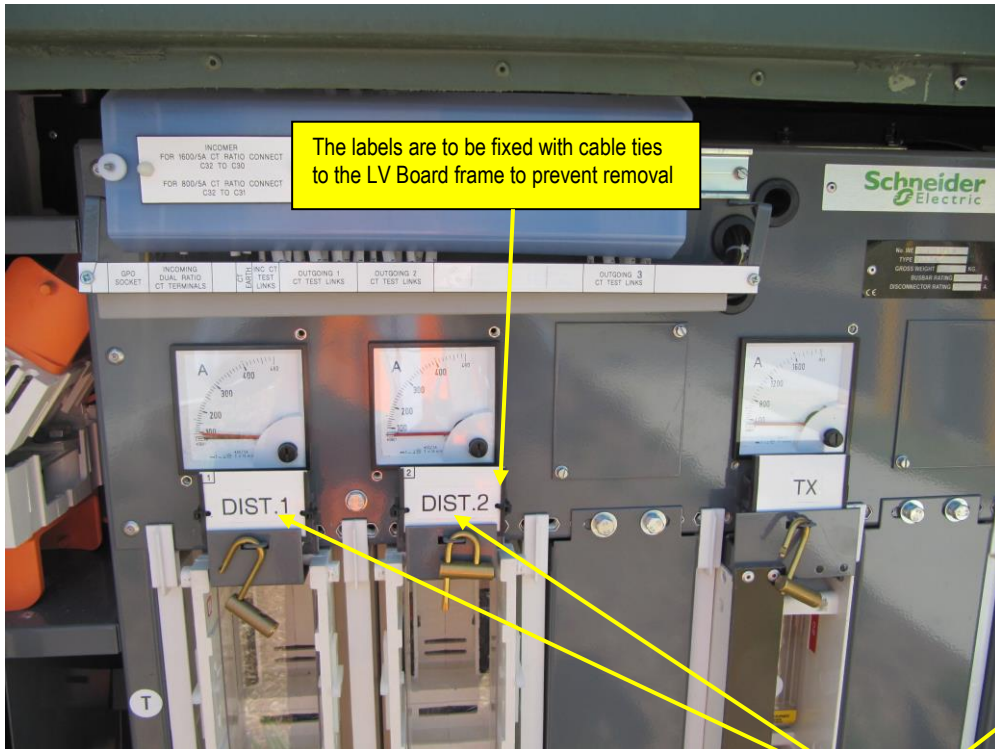
Kiosk LV Board Labelling



Labels are to be laminated adhesive backed tape on white PVC sheet of minimum thickness 1.5 mm. Size must be suitable for the equipment and position of the label but not less than 25 mm x 25 mm. Minimum letter height is 12 mm.

Phase labelling must be attached to the right hand side (RHS) frame of the low voltage board in the correct phase sequence from top to bottom, eg ABC, or CBA, or BCA

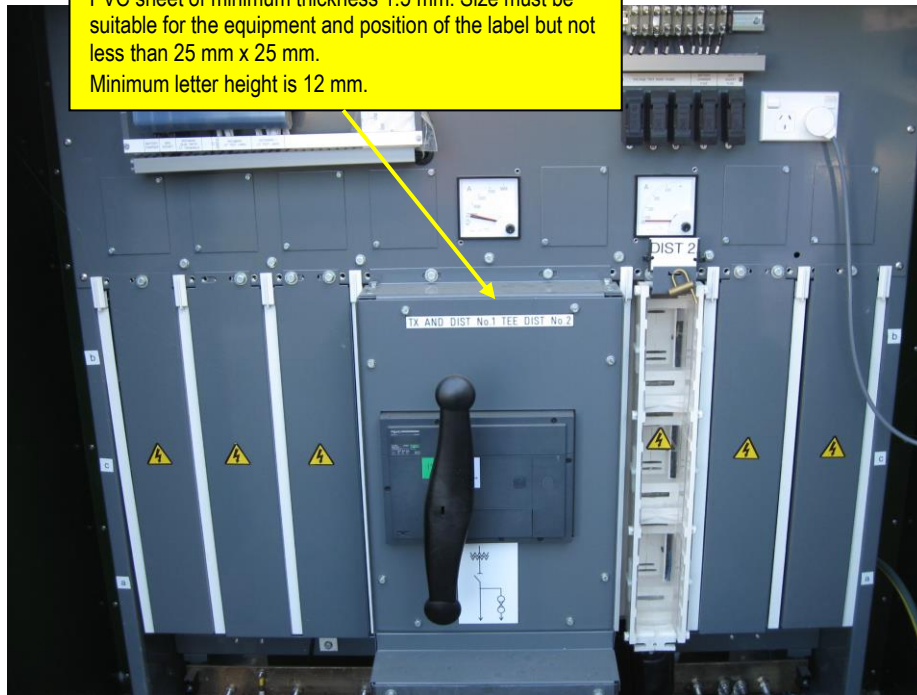
Kiosk LV Board Labelling



The number allocated to each distributor shall be attached beside the distributor control. Eg. Dist.1, Dist.2 or TX for Bus bar link

Kiosk LV Board Labelling

Labels are to be laminated adhesive backed tape on white PVC sheet of minimum thickness 1.5 mm. Size must be suitable for the equipment and position of the label but not less than 25 mm x 25 mm. Minimum letter height is 12 mm.

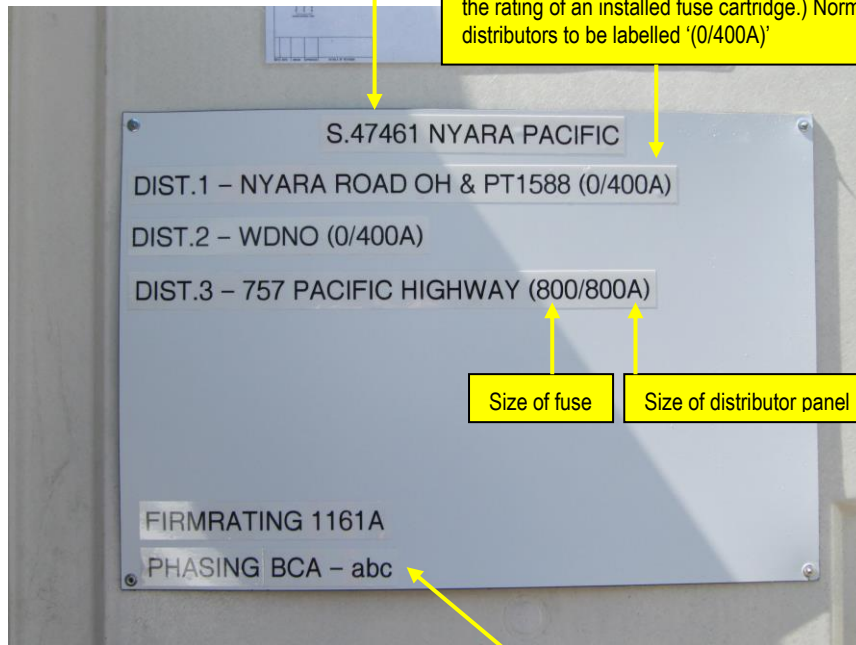


Kiosk LV Labelling

Substation Distributor Legend to be placed on the inside of the RHS door

Labels are to be laminated adhesive backed tape on white PVC sheet of minimum thickness 1.5 mm. Size must be suitable for the equipment and position of the label but not less than 25 mm x 25 mm. Minimum letter height is 12 mm.

The nominal current rating of each distributor circuit control shall be labelled beside the control or in the legend. (The current rating is not necessarily the same as the rating of an installed fuse cartridge.) Normally Open distributors to be labelled '(0/400A)'



Size of fuse

Size of distributor panel

For kiosks the words "Firm Rating - xxxxA" (include actual rating) is to be included as part of the overall LV distributor name legend and phasing label fitted on the inside surface of the right hand kiosk door at the LV end

Kiosk Earth Group Labelling

Earth Electrode groups to be labelled Group 'A' or 'B' depending on the location.



****Please note for the Hunter region, the ASP is to place a Laminated LV diagram on the inside of the door in addition to the legend where the Distributor names are LVF numbers and are not descriptive of the LV destinations. ****