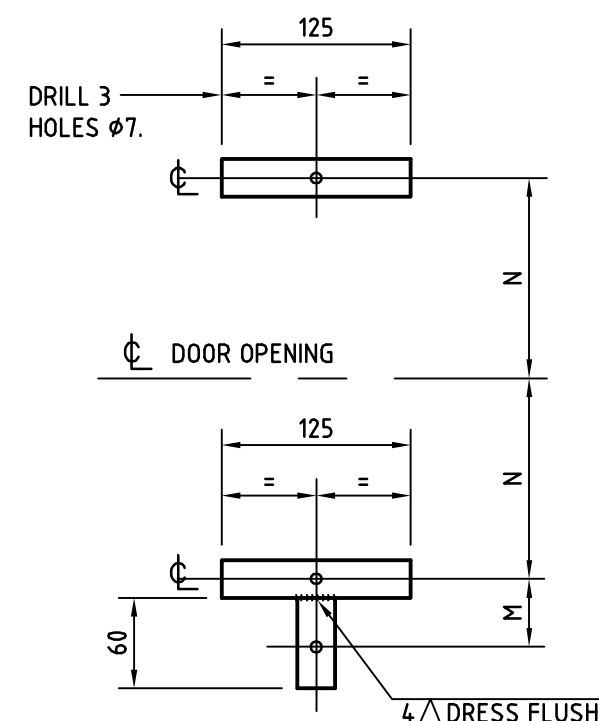
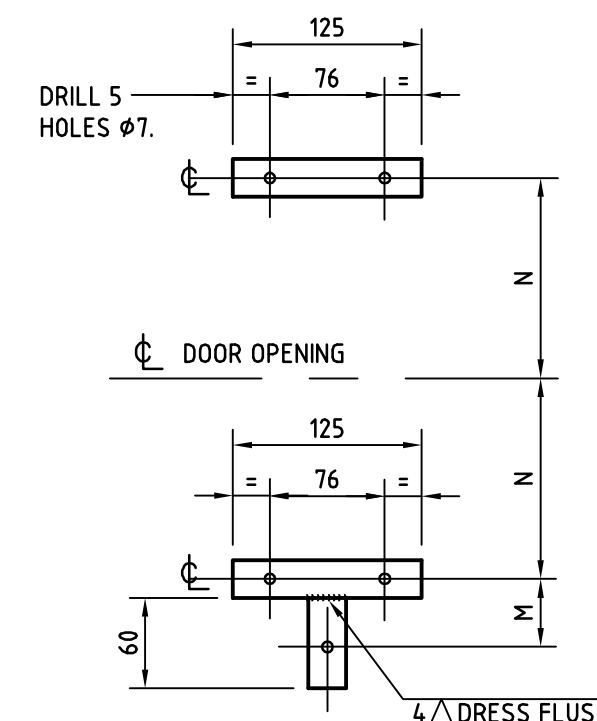


SPIGOT DETAILS



PANEL MOUNTING BRACKET

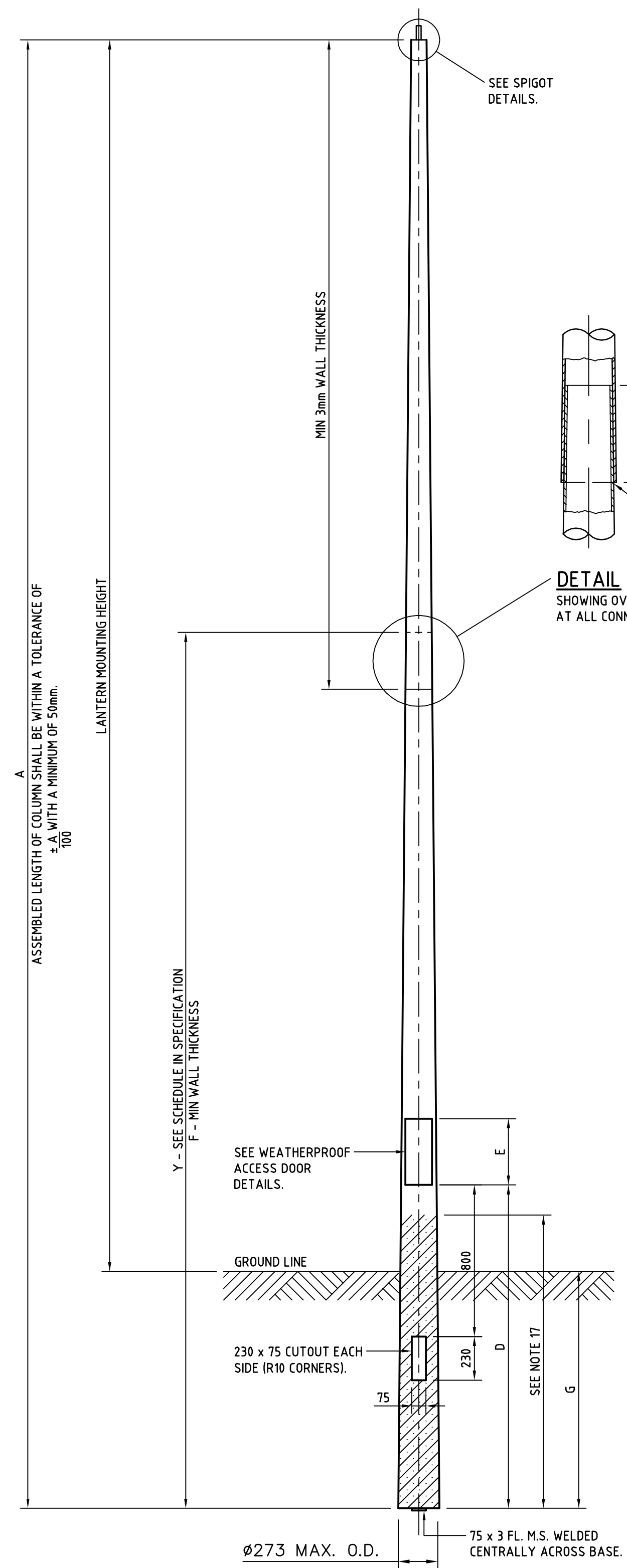
MATERIAL: 25 x 5mm THK M.S FOR STANDARDS 6.5m & BELOW.



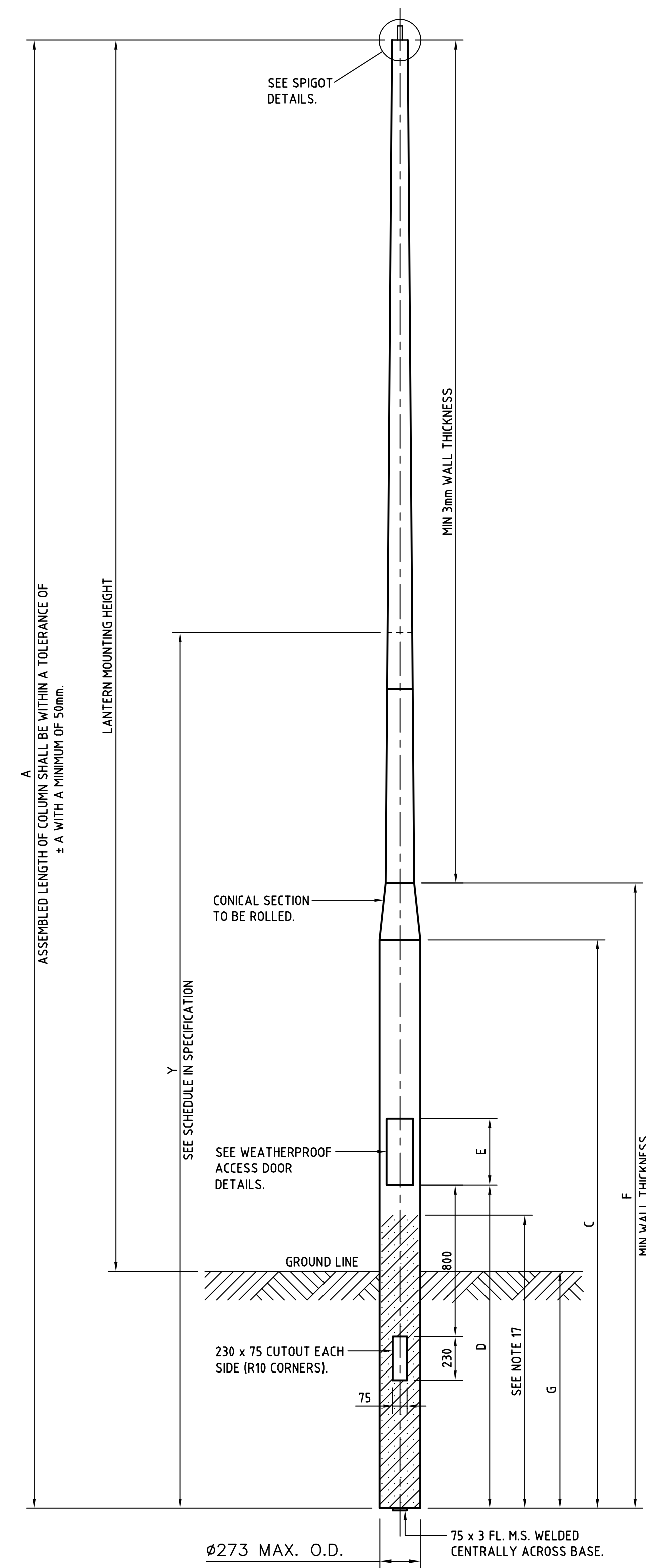
PANEL MOUNTING BRACKET

MATERIAL: 25 x 5mm THK M.S FOR STANDARDS 7.0m & ABOVE.

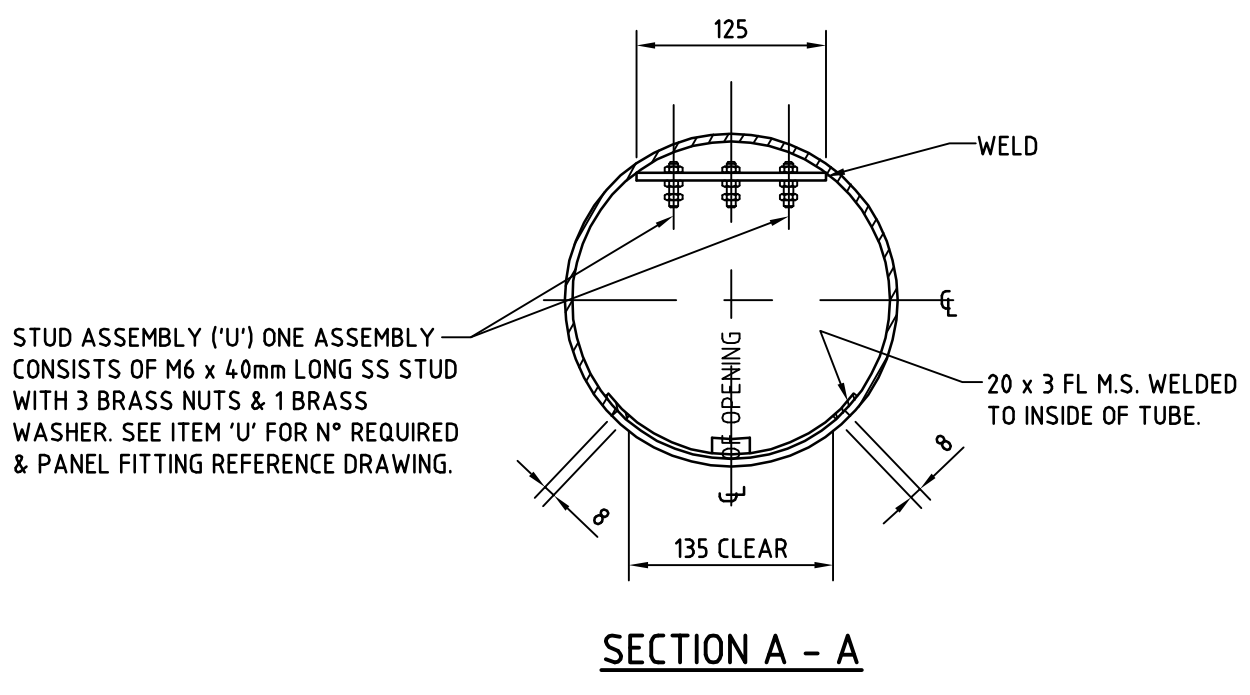
COLUMN LANTERN MOUNTING HEIGHT	DESCRIPTION	STOCK CODE	DIMENSIONS (mm)								WEIGHTS (kg)			REMARKS	
			A	B	C	D	E	F	G	H	M	N	U REQ'D		
3.0m	3m P.T.U.	72041	4000	N/A	N/A	1460	420	4.8	1000	180	60	115	3	B1-4192 A2-62525	CONTINUOUS TAPERED
4.5m	4.5m P.T.U.	72017	5750	N/A	N/A	1710	420	4.8	1250	180	60	178	3	B1-4192 A2-62525	CONTINUOUS TAPERED
7.0m	7m P.T.U.	72033	8500	N/A	N/A	1960	610	4.8	1500	210	45	286	5	B1-24969 A1-56312	CONTINUOUS TAPERED
8.5m	8.5m P.T.U.	72025	10000	N/A	N/A	1960	610	4.8	1500	210	45	286	5	B1-24969 A1-56312	CONTINUOUS TAPERED
10.5m	10.5m P.T.U.	89953	12250	NA	3250	2210	610	4.8	1750	210	45	286	5	B1-24969 A1-56312	REDUCED TAPER TYPE



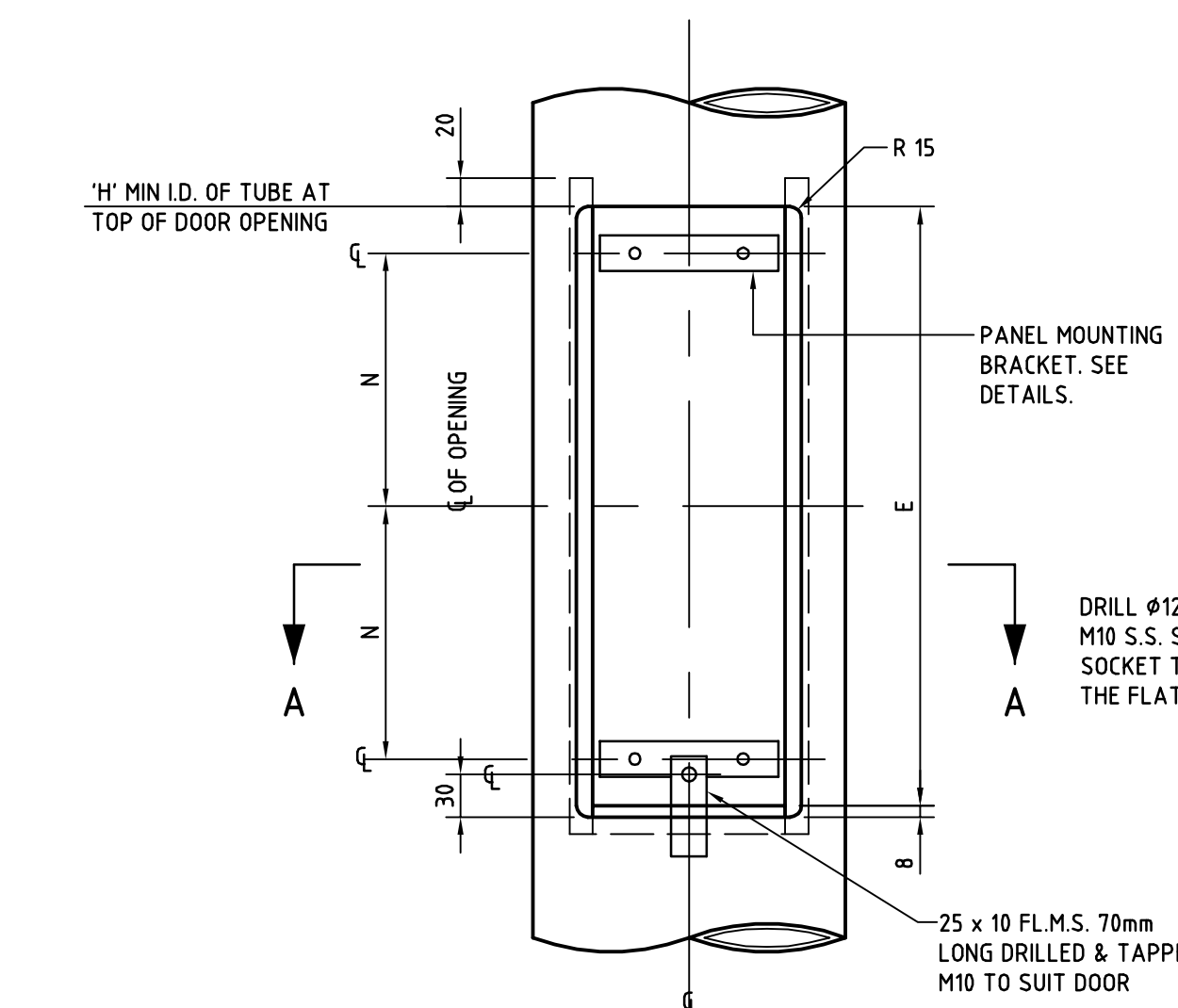
CONTINUOUSLY TAPERED COLUMN



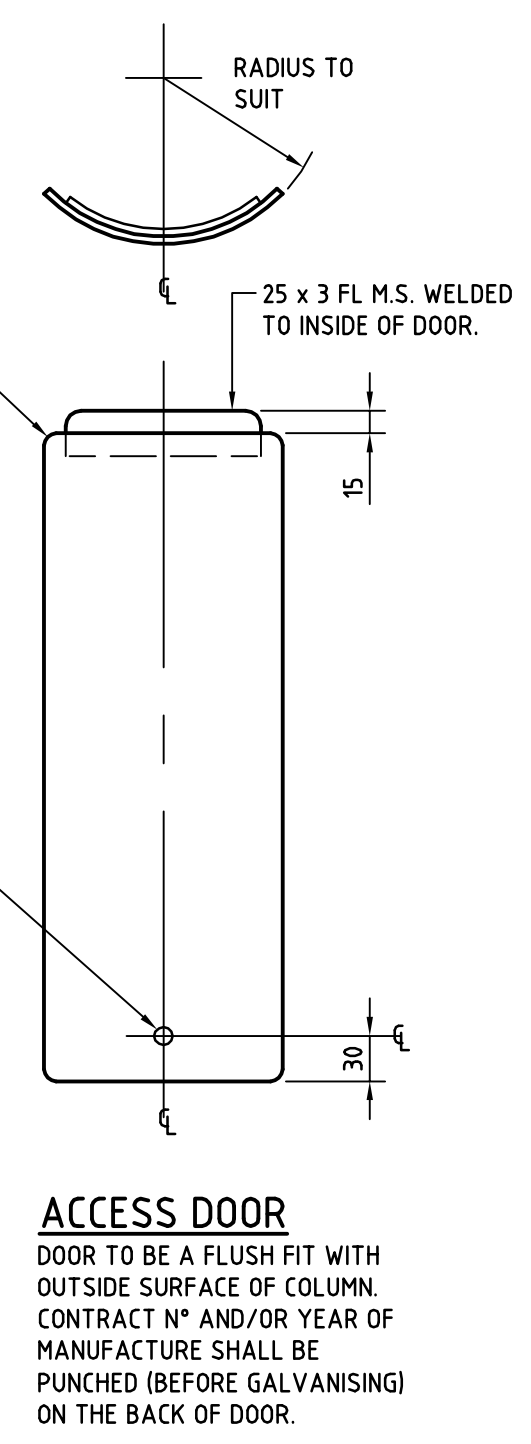
REDUCED COLUMN



SECTION A - A



WEATHERPROOF ACCESS DOOR OPENING



ACCESS DOOR

REFERENCE DRAWINGS

- M.E.D. LAMP CHOKE PANELS STREET LIGHTING COLUMNS B1-24969
- PANELS FOR 3.0, 4.5, 6.0 & 6.5m STREET LIGHTING STANDARDS B1-4192
- P.T.U. INSULATED SPIGOT FOR 4.5, 7, & 8.5m POST TOP COLUMNS A2-43238
- H.P.S. LAMP CHOKE PANELS STREET LIGHTING COLUMNS A1-56312
- 6.5m STREET LIGHTING STANDARD LAMP SUPPLY PANEL A2-62525
- MODIFIED ROCKS STYLE LIGHTING COLUMN A2-63040
- STREET LIGHTING COLUMNS WIND LOADING ALLOWABLE CONDITIONS A2-118244

NOTES

- ALL STEELWORK TO BE FABRICATED IN ACCORDANCE WITH AS 4100.
- UNLESS NOTED OTHERWISE:
  - (a) ALL HOT ROLLED FLATS TO BE GRADE 250 MINIMUM IN ACCORDANCE WITH AS 1594.
  - (b) ALL HOT ROLLED SECTIONS TO BE GRADE 250 MINIMUM IN ACCORDANCE WITH AS 3679.
  - (c) ALL HOLLOW SECTIONS TO BE GRADE C350 IN ACCORDANCE WITH AS 1163.
- AFTER FABRICATION, ALL BURRS AND SHARP EDGES TO BE REMOVED.
- ALL WELDING TO BE IN ACCORDANCE WITH AS 1554 PART 1.
- CONSUMABLES (ELECTRODES) SHALL BE MATCHED WITH THE STEEL TYPE IN COMPLIANCE WITH AS/NZS 1554.1 TABLE 4.6.1(A) & THE RELEVANT COLUMNS OF THE TABLE DEPENDING ON THE TYPE OF WELDING PROCESS BEING UNDERTAKEN.
- UNLESS NOTED OTHERWISE:
  - (a) ALL WELDS SHALL BE 6mm CONTINUOUS FILLET WELDS, CATEGORY GP.
  - (b) BUTT WELDS SHALL BE CONTINUOUS FULL PENETRATION, CATEGORY SP.
  - (c) ALL WELDS TO BE CARRIED OUT IN THE SHOP UNLESS NOTED AS 'WELD ON SITE'.
- WELDS SHALL BE INSPECTED TO AS/NZS 1554.1 CLAUSE 7.3 (VISUAL INSPECTION OF WORK) UNLESS THE WELDING PROCESS IS SUPERVISED AND CARRIED OUT BY QUALIFIED PERSONNEL AS DEFINED IN AS/NZS 1554.1 CLAUSE 4.12.1 AND CLAUSE 4.12.2.
- AFTER FABRICATION, ALL WELDS TO BE CHIPPED FREE OF SLAG.
- AFTER FABRICATION, ALL STEELWORK TO BE HOT DIP GALVANISED TO AS 4680.
- AFTER GALVANISING, ALL HOLES TO BE CLEARED AND SHARP EDGES TO BE REMOVED.
- WHERE THE GALVANISING FINISH HAS BEEN DAMAGED, AREA TO BE TREATED WITH COLD GALVANISING PAINT SIMILAR TO ZINCIFIX. COATINGS TO BE APPLIED IN ACCORDANCE WITH THE MANUFACTURERS INSTRUCTIONS.
- ALL BOLTS, NUTS AND WASHERS TO BE HOT DIP GALVANISED TO AS 1214.
- ALL WELDED JOINTS TO BE SEAL WELDED.
- DRAWING TO BE READ IN CONJUNCTION WITH ASSOCIATED SPECIFICATION.
- TOLERANCING IS TO BE IN ACCORDANCE WITH AS 1798.
- COLUMNS SHALL BE CAPABLE OF SUPPORTING THE LANTERN MASS & WITHSTANDING THE WINDFORCES TO AS 1170.2 & AS SPECIFIED ON DRAWING A2-118244.
- COAT BASE FROM BOTTOM TO 300mm ABOVE GROUND LINE WITH 2 COATS OF 125MICRONS THICK DULUX 'DUREBILD S.T.E.' EPOXY MASTIC.

CAD DRAWING  
DO NOT MANUALLY AMEND  
AMENDMENTS  
16. DRAWING BORDER UPDATED  
NOTES UPDATED  
C.SAWDY 21.05.2013  
17. NOW CONTINUOUSLY TAPERED. DIM 'C' IN TABLE ALTERED FOR 7.0m & 8.5m COLUMNS.  
C.SAWDY 07.02.2013  
APPROVED: PHIL HUDSON

NETWORK STANDARD  
**Ausgrid**  
MECHANICAL DESIGN  
570 GEORGE STREET  
SYDNEY NSW 2000

SCALE	1 : 2, 5, 20
DESIGNED	
DRAWN	COLIN SAWDY
CHECKED	K.E.M.
APPROVED	J.H.
DATE	03.12.1986
PRJTRK No.	
PROJECT NUMBER	ES-22048

STREET LIGHTING  
STEEL POST TOP COLUMNS  
IN-GROUND MOUNTED  
LIMITING DIMENSIONS

DRAWING No **66271** SHEET 1 AMD 17 SIZE B1

